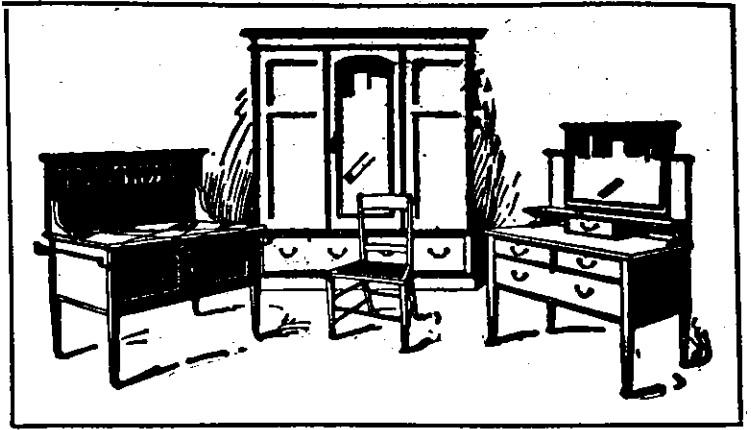


YOU MUST SEE OUR FURNITURE



THE SCOLLAR CO. LTD.
LAMBTON QUAY, WELLINGTON



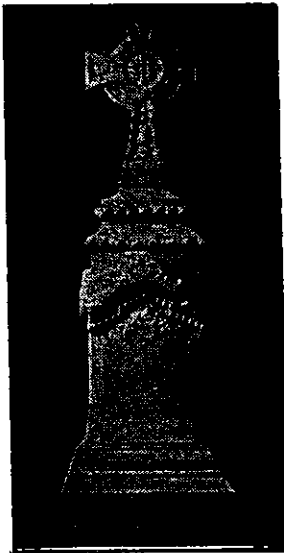
WHETHER you are an intending purchaser or merely wish to see what we have got, we invite you to come and walk round. Few there are indeed who at this time of the year have not some household requirement. We have a very wide selection of sound artistic furniture of every kind for every apartment in your house. We have also an excellent assortment of new designs in Carpets, Rugs, Linoleums, etc. Let us talk things over, anyway, this will cost you nothing.



HICKMOTT & SON

MONUMENTAL AND ECCLESIASTICAL SCULPTORS

THORNDON QUAY : : WELLINGTON



Being the only Catholic Firm in the district we wish to inform our West Coast friends that we specialise in Catholic work, and have a Large Selection of beautifully designed Monuments, Headstones, and Crosses at our Works.

We are SPECIALISTS and GOLD MEDALISTS in Engraving and Imperishable Lead Lettering. Estimates and designs given for all classes of Church Work—ALTARS, PULPITS, FONTS.

Inspection Cordially Invited.

NOTES ON HEALTH

The question of health is one nobody can afford to neglect, yet many people will risk their health by buying inferior food when they can get the very best at the same price. More particularly does this apply to bread.

KELLOW BREAD

is the only bread made in Wellington which is TRULY AUTOMATIC. Many other bakers are using this name and claiming it for their bread, but the only true Automatic Bread is the FAMOUS "KELLOW" BREAD. Don't delay one day longer; have these Crusty, Golden-colored, HEALTH-GIVING LOAVES brought into your house to-day. Ring up 'PHONE No. 986 and give instructions for the cart to call.

If you once try this bread you will never go back to bread made by hands in the old-time, out-of-date method. "KELLOW" is untouched by hand. "KELLOW" bread is made only by :

The New Zealand Automatic Bakeries : Limited
106-110 Taranaki Street : Wellington

W. A. KELLOW, MANAGING DIRECTOR.
COME AND SEE YOUR BREAD MADE.

J. S. BURN, SECRETARY.
RING TELEPHONE NUMBER 986.