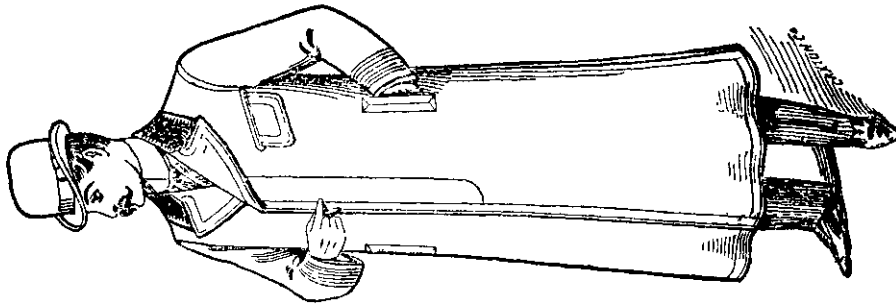


GENTLEMEN'S FASHIONABLE OVERCOATS

Ready Made.



THIS STYLE

in the celebrated

Rainproof Tweeds

from

45s to 55s

FIT EQUAL

to

MEASURE.



NEW ZEALAND CLOTHING FACTORY.

BRANCHES THROUGHOUT THE COLONY.

PIANOS. ORGANS. PIANOS

The Largest and Best-Assorted Stock in New Zealand to select from at

WHOLESALE PRICES FOR CASH,

OR ON THE ONE, TWO OR THREE YEARS' HIRE SYSTEM FROM 20s. MONTHLY.

DESIGNS, PRICES AND TERMS POST FREE.

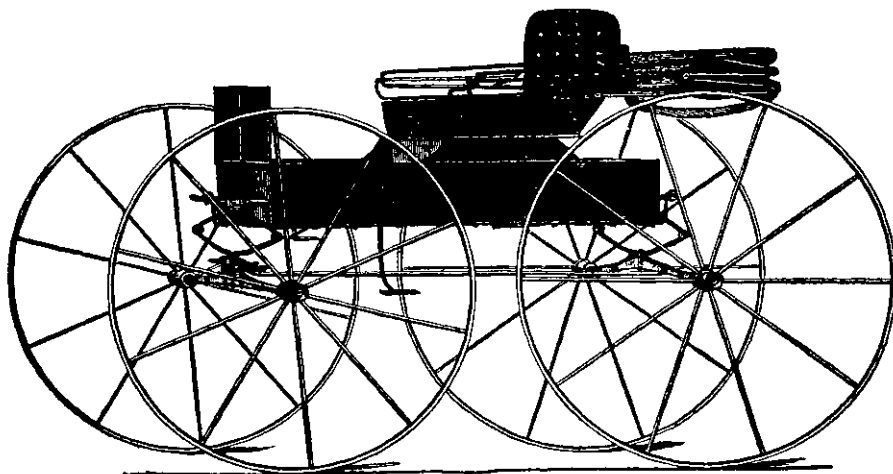
OUR SHEET MUSIC DEPARTMENT IS THE MOST COMPLETE IN THE COLONY.

Catalogues Post Free on Application.

THE DRESDEN

PIANOFORTE MANUFACTURING AND AGENCY COMPANY,
and 31, PRINCES STREET, DUNEDIN.

J. A. X. RIEDLE, Manager



Dunedin Carriage Factory.

HORDERN & WHITE,

PRINCES STREET SOUTH,
DUNEDIN.

A varied stock of Vehicles always on hand to select from.

NOTICE.

NOW READY—Nos. 1 and 2, Catechisms of the Christian Doctrine.

Approved by His Grace the Archbishop of Wellington and the other Catholic Bishops of New Zealand.

To be had from—

- His Grace Most Rev Dr. REDWOOD, Wellington
- Right Rev. Dr. GRIMES, Christchurch,
- Right Rev. Dr. LENIHAN, Auckland,
- Right Rev. Dr. VERDON, Dunedin,
- Whitaker Bros., Wellington and Greymouth.
- E. O'Connor, Stationer, Christchurch
- P. F. Hiscocks and Son, Auckland.

Also from the
TABLET Office Octagon Dunedin.

Are You Ruptured?

Then send 1d stamp for Pamphlet entitled "A Warning and Guide to the Ruptured,"
By an Eminent Medical Authority.

Will save you wasting time and money on treatments condemned by the highest experts. Beware of any treatment that includes elastic trusses. Consultation Free.

Hours: 10 a.m. to 12 a.m.
2 p.m. to 6 p.m.
Saturdays 10 a.m. to 12
Evening, Tuesday and Friday, 7 to 8

ADDRESS: **A. W. MARTIN,**
28 Smith Street, Dunedin.
Entrance, Next Y.W.C.A. Rooms, Upper Moray Place,