

The Southland Implement & Engineering Co.

INVERCARGILL & CHRISTCHURCH

IF YOU WANT

A DRILL

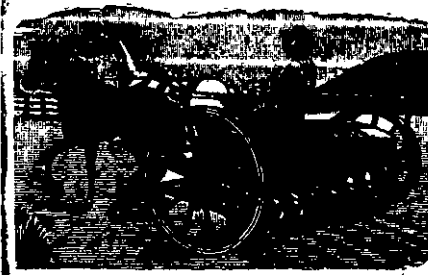
BUY THE BEST

The "COLONIAL"

Dunedin Agents:

Otago Farmers' Co-operative Association
of N.Z., Ltd.

Agencies throughout New Zealand



W. S. JONES,

Established 1871.

SADDLER & HARNESS MAKER

Contractor to N.Z. Government.

Specialties in Hunting, Race, and Steeplechase Saddles.

Ladies' and Children's Saddles in variety. Every description of HARNESS made on the premises by first-class workmen.

No piecework.

PARTICULAR ATTENTION TO REPAIRS. Horse Clothing and Covers—Own make and Best Imported.

Direct Importer of Stable Requisites of every description.

Noted for well-fitting & durable Collars.

QUEEN STREET, AUCKLAND.

J. F. WILSON,

DENTIST

(Late R. J. B. Yule).

SPEY STREET, INVERCARGILL.

MR. WILSON, having purchased the goodwill of Mr. Yule's practice, would like patients to understand that any contracts entered into by Mr. Yule for mechanical work or otherwise, will be carried out by him without any difference in fee. Any alterations and so on free of charge.

HOURS OF CONSULTATION—9 a.m.

5.30 p.m., and 7 to 8 p.m.

Hospital patients attended to Tuesday and Friday mornings from 9 to 9.30.

RAILWAY HOTEL

THORNDON QUAY, WELLINGTON.

JAMES DEALY ... Proprietor

This well-known Hotel is in close proximity to both Railway Stations, thereby offering great facility to the travelling public of being able to leave by the early trains.

Guests may depend upon being called in time, a porter being kept for that purpose.

The Bedrooms are well and comfortably furnished, and the Fittings and Accommodation throughout is all that could be desired.

The Wines and Spirits are all of the Choiceest and Best Brands. Dunedin XXXX Beer always on tap.

Table d'Hotel daily from 12 to 2, and Meals at all hours for travellers. Free Stabling.



MURRAY AND CO.

(Late J. Gardner and Co.),

32 PRINCES ST. (Opposite City Hotel),

Are showing New Goods in

MEN'S HARD FELT, FRAME, AND STRAW HATS.

Novelties in Ties, White Shirts, Tennis Shirts, White and Colored Fancy Washing Vests.

Men's and Youths'

White Cricket and Tennis Trousers

And all up-to-date

GENTS' UNDERWEAR.

MOUNTAINEER HOTEL,

QUEENSTOWN,

LAKE WAKATIPU.

Proprietor - P. MCCARTHY.

This New and Commodious Hotel has been well furnished throughout and is now one of the most comfortable Houses in Otago. Suites of Rooms have been set apart for Families, and every attention has been paid to the arrangements for carrying on a first-class trade. Hot, Cold, and Shower Bath.

TERMS MODERATE.

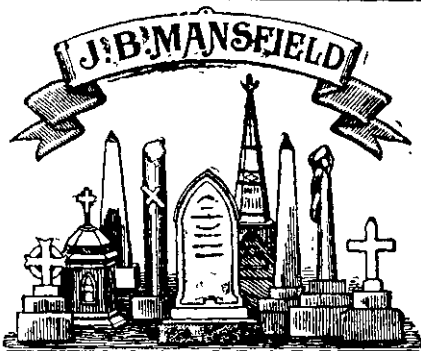
Best Brands of Wines, Spirits, and Beers.

FIRST-CLASS SAMPLE ROOM.

A Porter will attend Passengers on the Arrival and Departure of Steamers.

First-class Stabling.

Horses and Buggies for Hire.



MANCHESTER STREET SOUTH,

Near Railway Station,

CHRISTCHURCH.

EXCELSIOR HOTEL,

DUNEDIN.

RODERICK MACKENZIE,

Late of the Oban Hotel, Dunedin,

Begs to notify that he has taken Donaldson's (Excelsior) Hotel, at the corner of Dowling and Princes streets, Dunedin, where he will be glad to meet his friends.

The Hotel is newly built, has excellent accommodation for families, and all the appointments and sanitary arrangements, including hot, cold, and shower baths, are first class.

The position is central to post office, railway station, and wharf.

The famous Tobermory Brand Whisky drawn from the tap.

All the Liquors kept are of the best brands. Charges moderate. Telephone 784

W. M. HOBAN,

BARRISTER & SOLICITOR,

191 HEREFORD ST., CHRISTCHURCH

£10,000 to lend at current rates in any sums Mining a Speciality.

THE KAITANGATA RAILWAY AND COAL COMPANY, LIMITED.

THE NATURAL EXCELLENCE of the REAL and ORIGINAL KAITANGATA COAL for every purpose is so universally recognised by all HOUSEHOLDERS and MANUFACTURERS throughout the Middle Island now, that it would be superfluous for the Company to detail the special features of its superiority over all other coals in every notice like this. The present, therefore, is only to assure the Public generally that the Coal maintains its excellence, and is sold by all Merchants in the trade.

The KAITANGATA ALMANAC will be delivered to Consumers as usual.

W. P. WATSON,

General Manager

Offices: Crawford street, Dunedin,
12th November, 1896.

GRIDIRON HOTEL,

PRINCES STREET SOUTH,
DUNEDIN.

A. SMITH - PROPRIETOR

(Late of Alexandra South).

Having purchased the above popular and centrally-situated Hotel, and having considerably added to and improved the accommodation, the Proprietor hopes, by strict attention to the requirements of his customers, to obtain a fair share of support. Tourists, Travellers, and Boarders will find all the comforts of a home. Suites of Rooms for Families. Charges strictly Moderate.

A SPECIAL FEATURE—

1s LUNCHEON from 12 to 2 o'clock.

Hot, Cold, and Shower Baths. The very best of Wines, Ales, and Spirits supplied.

A Night Porter in attendance.

A. SMITH - PROPRIETOR.

Accommodation for over 100 guests.

GLADSTONE HOTEL,

MACLAGGAN ST., DUNEDIN

JOHN COLLINS (late of the Al Hotel, Pelichet Bay), PROPRIETOR.

Having leased the above centrally situated Hotel, the proprietor is now prepared to offer First-Class Accommodation to the general public. The building has undergone a thorough renovation from floor to ceiling. The bedrooms are neatly furnished and well ventilated.

Tourists, Travellers, and Boarders will find all the comforts of a home. Suites of rooms for families.

Hot, Cold, and Shower Baths.

A SPECIAL FEATURE—1s LUNCHEON from 12 to 2 o'clock.

The Very Best of Wines, Ales, and Spirits supplied.

CHARGES MODERATE.

Accommodation for over 100 guests.

One of Alcock's Billiard Tables.

JOHN COLLINS - PROPRIETOR.

BEATH AND CO.,

DRAPERS, CHRISTCHURCH,

Are worthy of our Support.