

WRIGGLESWORTH AND BINNS, PHOTOGRAPHERS

To His EXCELLENCY THE GOVERNOR,
CHRISTCHURCH, WELLINGTON, AND DUNEDIN.

SIEVWRIGHT BROS. AND CO., HIGH STREET, DUNEDIN

HOTEL BROKERS AND AGENTS.

We have some of the Best Hotels in the South Island on
our books for Sale.

Valuations made and advances arranged
on Hotels.

R. S. BLACK,

RABBIT EXPORTER, DUNEDIN.

Is prepared to receive Rabbits at Cattle Yards, Mataura, and Ocean
Beach, Bluff.

Special arrangements with Large Landowners to
clear their ground of Rabbits.

RELIABLE AGENTS WANTED.

Box 230. Office, opposite Telegraph Office, Dunedin.

BARR, LEARY & CO.

STOCK AND SHAREBROKERS,

CRAWFORD STREET, DUNEDIN,
and FEATHERSTON STREET, WELLINGTON.

Correspondents all over the Otago and Westland Goldfields.

Members Dunedin Stock Exchange.

W. THOMAS,

Monumental, Marble, Granite . . .

. . . and Stone Works,

CORNER OF VICTORIA & LORNE STREETS,

AUCKLAND, EAST.

MONUMENTS, TOMBS, HEADSTONES, CHURCH FONTS,
TABLETS, &C.

IRON RAILINGS and STONE SURROUNDINGS.

Designs and Price Lists free on application.

Restoration work carefully attended to.

ARTHUR NATHAN'S "RELIABLE" TEAS

CEYLON, INDIAN and BLENDED,

Have for years past maintained their super-
ior character for UNIFORM QUALITY and
GOOD VALUE.

Householders will find them the most
economical to buy, yet for Strength and
Fragrance they LEAVE NOTHING TO BE
DESIRED.

ASK FOR . . .

ARTHUR NATHAN'S LEAD
PACKETS RELIABLE TEA

and see that you get them and none
other.

ARTHUR NATHAN, AUCKLAND.

HOLIDAY BOOTS!



The old shop still Leads.

SIMON

Our Qualities and
Prices give
Satisfaction.
Don't Forget Us.

Largest Stock in the
City.
Test our Prices.

BROS.

COUNTRY FRIENDS.—Send for our
new Price List: it will surprise you.

BOOT MANUFACTURERS,

GEORGE ST., near Octagon,
also

PRINCES ST., opp. Post Office., Dunedin.
(Continental Boot Depot.)

SILVERINE

A perfect substitute for Silver at a
Fraction of the Cost.

SILVERINE

Is a Solid Metal, takes a High Polish
and Wears White all through. More
durable than Electroplate, at one-
third the cost.

SILVERINE

Has given Immense Satisfaction to
thousands of Purchasers.

SILVERINE

Posted Free to any part of New
Zealand at following prices:
Tea, Afternoon and Egg Spoons

	5s doz
Dessert Spoons and Forks	10s doz
Table Spoons and Forks	15s doz

SOLE AGENTS

EDWARD REECE & SONS

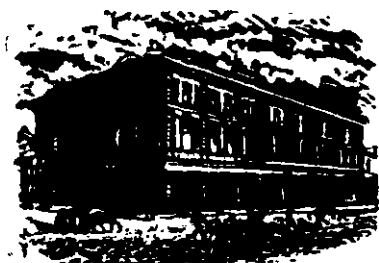
FURNISHING AND GENERAL
IRONMONGERS,

COLOMBO ST., CHRISTCHURCH

CITY HOTEL, DUNEDIN.

Having LEASED my
HOTEL to Messrs. J. J.
CONNOR and J. T.
HARRIS, I have to
THANK the PATRONS
of the 'City' for their
LIBERAL PATRONAGE;
and in bespeaking a Con-
tinuance of the same for
my successors I feel quite
satisfied that the reputa-
tion the Hotel has enjoyed
will be fully maintained
under their Management.

J. F. NIXON



WITH reference to the above, we feel that it is hardly necessary
to assure our Friends and the Patrons of the 'City' that no
effort will be spared on our part to merit the Patronage so liberally
bestowed on our esteemed predecessor.

J. J. CONNOR } Proprietors.
J. T. HARRIS }

CRITERION HOTEL, PRINCES STREET, DUNEDIN.

CONNOR AND HARRIS, PROPRIETORS.

We have great pleasure in announcing that we have purchased the
above well-known house from MR. JAMES LISTON, so long and
favourably known in connection with its management. We need
hardly assure our Friends and the General Public that we will make
the CRITERION a really comfortable home for COMMERCIAL
MEN and TRAVELLERS.

IN reference to the above announcement by MESSRS. CONNOR
AND HARRIS, I regret that, owing to ill-health, I am com-
pelled to retire from active business and have sold them my interest
in the CRITERION. I have to thank all my Friends for the liberal
support I have received in this favourite house, and now bespeak
continuance of this support for my esteemed successors, who, I feel
sure, will make the CRITERION HOTEL one of the best homes in
the Colony.

JAMES LISTON.