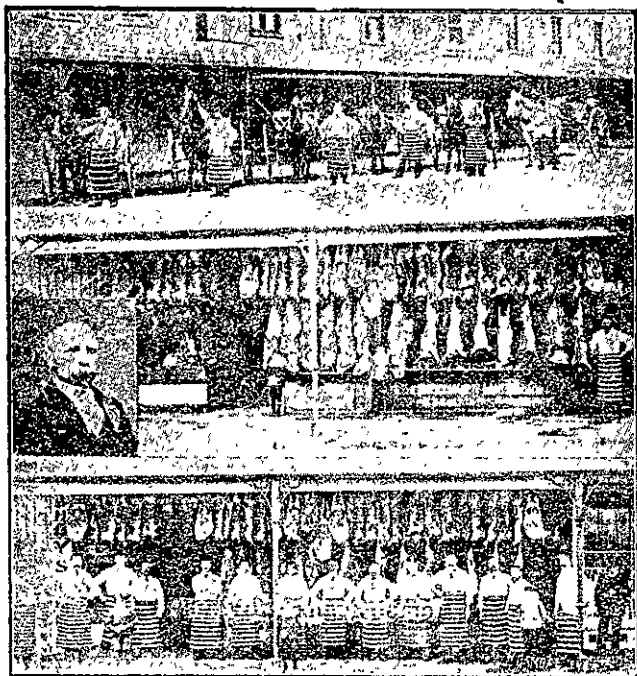


**F. H. STEEL**  
BUTCHER.



The Leading Establishment of its kind in Christchurch. Nothing but absolutely the Best Meat the country produces kept. Small Goods a Speciality. The Annual Output reaches nearly Half a Million Pounds. The quantity sold speaks for itself. Customers in City and Suburbs Waited on Daily for Orders. Country Customers can always rely on letters and telegrams being promptly attended to.  
178 & 180 COLOMBO ST., CHRISTCHURCH.

**Catholic Marriages.**

CONTENTS.—PART I.  
FOURTH EDITION.

The Decree of August 2, 1907:	Page
Latin Text ... ..	1
English Translation ... ..	5
PART II.	
The Decree Popularly Explained (Pastoral Letter of the Archbishop and Bishops of the Ecclesiastical Province of Melbourne) ... ..	11
PART III.	
A Controversy on the Decree (Christchurch Press, March 3 to April 2, 1908), with Notes and Comments ... ..	20
PART IV.	
An Exposition of the Catholic Position in Regard to Impediments Invalidating Marriage ...	61
First Division: Some Fallacies Considered ...	61
Second Division: The Mission and Authority of the Church ... ..	80
Third Division: The Relations of the Church to the Marriage Contract ... ..	98
Fourth Division: Invalidating Legislation of the Jewish and the Christian Church ... ..	140
Appendix ... ..	143
Index ... ..	145
Price ... ..	One Shilling (Posted)
Cloth Bound, Gold Titled ... ..	2s 6d. Posted.

**N.Z. Tablet Printing & Publishing Co.**

**ROYAL HOTEL - GREYMOUTH**

NEXT RAILWAY STATION.  
Patrons can depend upon being called to catch early trains, a Special Porter being kept for that purpose.  
40 LARGE COMMODIOUS ROOMS.  
TARIFF: 6/- A DAY  
F. M. DREWITT, Proprietor (late of Central Otago).

**Zealandia Shirts**

Feel Better, Look Better, Are Better than any others.

**Zealandia Collars**

"IMPROVED GOVERNOR" and all the ruling styles.

None Genuine Distinguishing  without the Brand . . .

Only Special Award and Gold Medal N.Z. International Exhibition, 1907.

IN ALL COMPETITIONS

**THEY BEAT THE BEST!**

**Get Ready for Your Fruit Tree Planting.**

NOW IS THE TIME to order New Fruit Trees and Small Fruit Bushes, and you can't do better than place your orders with us at once. Our Nurseries are famed for their splendid-growing Trees, which include Apples (on blight-proof stocks), Pears, Plums, Apricots, Cherries, etc. All hardy, all well rooted.

**If You Want Roses**

Buy here and get finely-rooted trees in perfect condition for planting.

We Supply also

**Ornamental and Flower Shrubs**

In infinite variety. Splendid collections sent to any address at small cost.

**Use H. M. Blight Specific**

The Best Remedy for Scale and Aphid on fruit trees.

**Howden and Moncrieff,**

51 Princes Street, Dunedin.

E  R.

CASSIDY AND CO.  
TELEGRAPH LINE OF ROYAL MAIL COACHES.

LEAVE BROKEN RIVER on arrival of West Coast Express every TUESDAY, THURSDAY, and SATURDAY, carrying mails and passengers for Oira, Kumara, Hokitika, Greymouth, Reefton, and Westport, ARRIVING GREYMOUTH SAME DAY. Passengers can obtain through Tickets at Railway Station.

WARNER'S HOTEL, LTD.,  
Christchurch Agents.  
CASSIDY AND CO., Proprietors.

**PATERSON & BURK**  
(W. J. BURK)

Venetian and Holland Blind Works.

Old Blinds Repainted and Repaired with promptness and despatch, equal to new. Shop and Office Windows Fitted with Latest and Improved Patterns of Holland Blinds and Patent Spring Rollers. A Large Assortment of Specially-prepared Tapes and Cords and every other requisite always on hand.

MORAY PLACE  
(Opposite Normal School).  
DUNEDIN.  
Telephone, 474.

ESTABLISHED 1880. 'PHONE No., 69.

**BAKER BROTHERS,**

FURNISHING UNDERTAKERS,

Corner of Wakanui Road and Cass ASHBURTON.

Direct Importers of Best and Latest Designs in Funeral Furnishings. Funerals Conducted with the Greatest Care and Satisfaction, at the Most Reasonable Charges. Streets, and Baker and Brown's Coach Factory.