



**Winter is Coming**

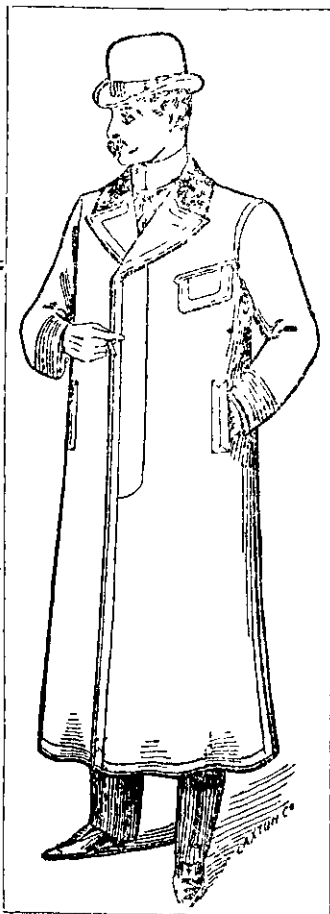
BE PREPARED  
By  
Purchasing One of  
OUR RELIABLE  
Rain Tweed  
**OVERCOATS.**

Fit and Style  
equal  
TO MEASURE.

PRICES :  
37/6 42/6 52/6

**N.Z. Clothing Factory**

(BRANCHES THROUGHOUT THE COLONY).



**Winter is Coming**

Also,  
**MEN'S  
WATERPROOFS**  
Sewn and Taped  
throughout,  
IN ALL STYLES,  
for  
WALKING, RIDING,  
DRIVING.

35/- 45/- 55/-



Established 1877

**Monumental Works.**

OUR aim is to give our patrons just what they want, and we never fail. Designs and Plans furnished on application, or we will be pleased to quote you a price for any design submitted to our firm

J. WATERWORTH & CO.,  
CLIVE SQUARE, NAPIER.

**W PARKINSON & CO**

**Monumental Sculptors**  
VICTORIA STREET, WEST AUCKLAND

Sculptors to Westland War and Coronation Memorial; N.Z. Battery Commemoration Statue, Albert Park, Auckland; Reed Memorial, Albert Park Rotorua War Memorial

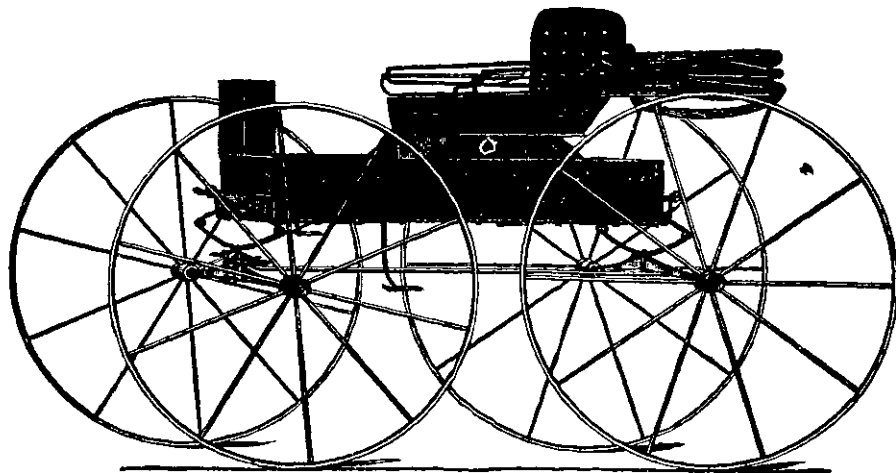
Invite inspection of their new and varied stock of  
**MARBLE AND GRANITE MONUMENTS  
HEADSTONES, &c.,**

which are of  
**RICH AND UNIQUE CHARACTER.**  
TELEPHONE

Iron Tomb Rails Catalogues on Application  
Note Address—Victoria Street, West  
(Between Hobson & Nelson Sts)

**JAMES SAMSON AND CO**

Auctioneers, Commission, House and  
Land Agents, Valuers,  
DOWLING STREET, DUNEDIN.



DUNEDIN CARRIAGE FACTORY

**HORDERN & WHITE,**

PRINCES STREET SOUTH,  
**DUNEDIN.**

A varied stock of Vehicles always  
on hand to select from.

...FOR...

**Pianos and Organs**

...Go to...

**MILNER & THOMPSON.**

106 MANCHESTER STREET, CHRISTCHURCH

LOW PRICES. EASY TERMS.

Any Instrument purchased from us will be delivered FREE to  
any part of New Zealand.

WRITE FOR OUR CATALOGUE.

**KEEP COOL**

The Most Refreshing and Cooling Drink for  
... Summer is ...

“GOLDEN APPLE” BRAND

**CIDER**

CALLED BY THE ANCIENTS

“The Milk of Paradise.”

**ARCHIBALD MILLER & Co., Grocers, George Street.**

BEST KEROSENE, 3s 9d per tier 50lb BAG FLOUR 5s 6d 25lb BA7 OATMEAL, 2s 8d.