

MESSRS. CROSS, FARMER AND COMPANY,

GRAIN, SEED, WOOL, AND

GENERAL AGRICULTURAL MERCHANTS AND AGENTS,

68 Manchester St South, Christchurch, N.Z.
(Five Minutes' walk from Railway Station).

FLOWER, VEGETABLE, AND FARM SEEDS.

New, of good quality and growth,
Arrived and to arrive ex steamer
From reliable Seed Merchants and Growers
In Great Britain, the Continent, &c
And are of the highest germination.

Our Seed Expert, who acts for the Government, has been awarded 9 Medals, 14 First Prizes and numerous other Awards, including

The Melbourne Exhibition Certificate and Medal, 1888-9.

L'Exposition Universelle et Internationale de Paris, 1889-90.
(All rights reserved)

TREES, SHRUBS (Ornamental and otherwise), and GRASSES on Sale.

Orders by Post promptly attended to.

Estimates given for Shipping to all parts of the world.

LAND, LANDSCAPE, MINING AND ENGINEERING SURVEYORS
Clearings and Contractors' Work measured accurately.

STOCK, LAND, AND ESTATE AGENTS.

We have several lines of First-class SHEEP for Sale, also various PROPERTIES.

VALUERS AND ARBITRATORS.

The Christchurch Nursery and Seed Depot.



THE GREATEST

WONDER OF MODERN TIMES!

HOLLOWAY'S PILLS

Long experience has proved these famous remedies to be most effectual in curing either the dangerous maladies or the slighter complaints which are more particularly incidental to the life of a man, or to those living in the bush.

Occasional doses of these Pills will guard the system against those evils which so often beset the human race, viz.—coughs, colds, and all disorders of the liver and stomach—the frequent forerunners of fever, dysentery, diarrhoea, and cholera.

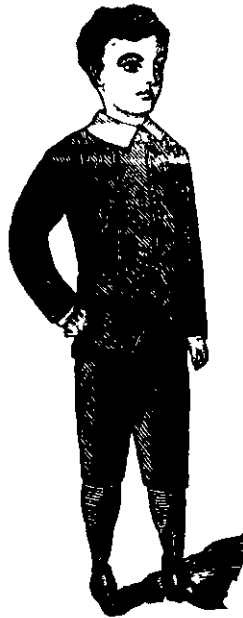
HOLLOWAY'S OINTMENT

Is the most effectual remedy for old sores, wounds, ulcers, rheumatism, and all skin diseases, in fact, when used according to the printed directions, it never fails to cure alike, deep and superficial ailments.

These Medicines may be obtained from all respectable Druggists and Store-keepers throughout the civilised world, with directions for use in almost every language.

They are prepared only by the Proprietor, Thomas Holloway, 533, Oxford Street, London.

Beware of counterfeits that may emanate from the United States.

W. A. TRIBE AND CO.199 CASHIEL STREET
(The Very Next Shop to Ballantynes),
CHRISTCHURCH.Manufacturers
Of all
Classes of
MEN'S,
BOYS'
And
JUVENILE
CLOTHING.
—
A
GOOD SOLID
TWEED SUIT
Made to
Measure,
42s 6d.
—
TROUSERS,
14s 6d.
—
TROUSERS
AND
VEST,
22s 6d.

COAL. BEST AND CHEAPEST COAL.

All Housekeepers desiring Economical Fuel use

GREY MOUTH COAL.

One Ton will last longer than 1½ ton of the best of other Colonial Coals.

Greymouth Coal is most economical for stationary and threshing engines, and for all kinds of steaming purposes.

To be obtained from
GREY VALLEY CO.'S DEPOTS:
tray street, Dunedin; Town Belt, Christchurch; and Manners st., Wellington.
M. KENNEDY,
Managing Director.*Zealandia*

BOOTS! BOOTS!

THE increasing demand for these Boots proves that the public appreciate their sterling QUALITY, and the numerous Testimonials received establishes the fact that the ZEALANDIA BOOTS is exactly what the careful householder requires.

When a purchaser sees this brand on a Boot he need look no further for he has found a Boot

That WILL WEAR wonderfully well,
That FITS COMFORTABLY every kind of foot, and is MODERATE in PRICE.

Can anything more be wanted?

You will save money by buying
ZEALANDIA BOOTS.

MR. T. S. LAMBERT
(Late of Christchurch & Dunedin),
Architect & Building Surveyor,
Has Commenced Business
IN WESTMINSTER CHAMBERS,
36, LAMINGTON QUAY,
WELLINGTON.
Consultations
Free.

J. WILSON
J. PAINTER AND PAPERHANGER,
CORNER ARCADE & BURNETT STREET,
ASHBURTON.**A. M'NAUGHTON & CO.**
SAUCE MANUFACTURERS,
MAITLAN STREET, DUNEDIN.

Ask your Grocer for M'Naughton's Prize Sauces.

Took Two Awards at New Zealand Exhibition.

Manufacturers of
Worcestershire, Corings, and Ketchup Sauce**SCOTCH STORES HOTEL.**CHARLES GOLDSMITH (Formerly proprietor of Lancaster Park Hotel, Christchurch) begs to thank his friends and patrons for the very liberal patronage he has received since entering into possession of the above stores. Visitors can always rely on receiving every attention. Best Wines, Spirits, and Ales. Medical Wines supplied.
(CHARLES GOLDSMITH ... Proprietor.)**PATENT BREAD**

NO MORE INDIGESTION.

MONTGOMERIE'S PATENT EXTRACT OF MALT.

DIGESTIVE BREAD, BISCUITS AND BUNS.

AWARDED GOLD MEDAL,

Glasgow and Edinburgh Exhibitions.

Highly recommended by the Medical Faculty.

See Circulars.

WM. WRIGHT

Having purchased the Patent Rights to Manufacture and Sell the Bread, Biscuits, and Buns, is the

SOLE MAKER IN DUNEDIN

See that the Bread is stamped

"W. WRIGHT. PATENT."

To be obtained from all principal Grocers and at

WM. WRIGHT'S

GLASGOW BREAD & BISCUIT FACTORY
KING AND UNION STREETS.**JAMES GRANT**VETERINARY HORSE-SHOER AND
GENERAL BLACKSMITH,

TEMUKA:

Horses carefully shod. All inquiries and malformation of the feet carefully treated gratuitously.

SPECIAL.

J. HENDRY AND SONS
MERCHANT TAILORS,

80 GEORGE STREET,

Wish to announce to their Customers and the Public generally they have Opened up, per a.s. Duke of Devonshire and a.s. Rushine, a Splendid Assortment of TWEEDS, COATINGS and FANCY SERGES of the Very Latest Designs to be had in the Home Market. Those desirous of having a first-class selection cannot do better than give us a call.
J. HENDRY AND SONS.**S. MURPHY**
(Opposite Wood's Boot Factory),
ROYAL ARCADE, DUNEDIN,

Begs to intimate to the Travelling and

General Public that she makes
GENTLEMEN'S SHIRTS, NIGHT-SHIRTS, &c.

Ladies' and Children's Underclothing, Pinafores, etc., of Every Variety.

Orders promptly attended to.—Prices Moderate.

TISCH'S TERMINUS HOTELNEW PLYMOUTH (op. Railway Station)
Families and Travellers visiting New Plymouth will find every convenience in above Private Rooms. Hot, Cold and Shower Bath
Terms moderate G. TISCH, Proprietor.