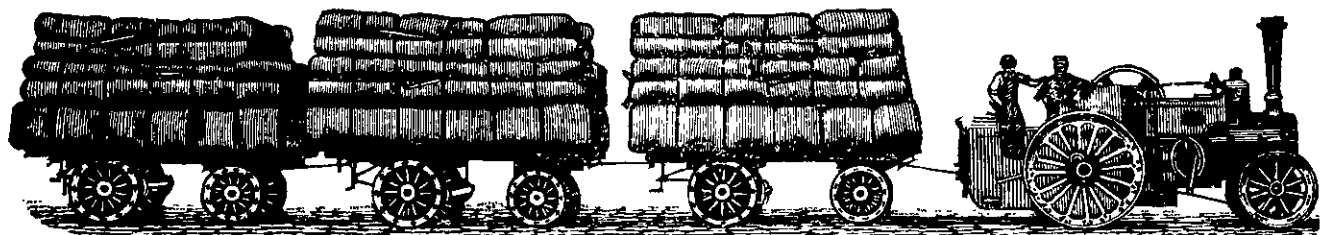


# J. & H. McLAREN'S (Leeds) TRACTION ENGINES

ALSO

PORTABLE, SEMI-PORTABLE, AND FIXED ENGINES

Combine Durability, Simplicity, Handiness, and Speed.



GOLD MEDAL, Haddington, N.B., after a Trial Open to All Comers. FIRST PRIZE, £75, Glasgow, 1888, after a Severe Trial. The above Awards are the Latest that have been competed for at Home, and McLAREN was First in both. They are the ONLY Traction Engines used for Carting Wool from the back country to Christchurch.

W A. McLAREN, AGENT, ST. ASAPH STREET, CHRISTCHURCH.

## GEORGE W. J. PARSONS,

MONUMENTAL MASON,  
56 AND 58 MANCHESTER STREET,  
CHRISTCHURCH.

Headstones and Monuments in Marble,  
Granite, and Stone.

Iron Railings, Concrete Enclosures and  
Every Description of Machinery  
work at Lowest Rates.

TELEPHONE, 682.

## SANITARY PIPE AND STONWARE FACTORY, KENSINGTON.

THE undersigned having purchased  
the above Work is prepared to sell at Lowest  
Current Rates

J. H. LAMBERT,

NORTH-EAST VALLEY AND KENSINGTON

## R. S. SPARROW AND CO GENERAL ENGINEERS, IRON AND BRASS FOUNDEERS, BOILERMAKERS, &c.

QUARTZ CRUSHING, PUMPING, AND  
WINDING MACHINERY,  
Gold Dredges and Dredging Machinery,  
Hydraulic Elevators and  
Sluicing Plant.

Iron and Steel Fluming  
(Manufactured by hydraulic machinery),  
Air Compressors, Rock Drills,  
Centrifugal Pumps,  
Turbine and other Water Wheels,  
Every description of Steam Engines and  
Boilers, Meat Preserving and  
Boiling Down Plant,  
&c., &c.

Plans and specifications prepared, and ex-  
perienced workmen sent to all parts of the  
Colony.

DUNEDIN IRONWORKS  
WILLIS STREET, DUNEDIN.

GO to the WEST END HAIR-  
DRESSING SALOON for a comfort-  
able Shave and neat Hair Cut. Best brands  
of Tobacco, Cigars, and Cigarettes always in  
Stock. Address—Opposite Zetland Arms,  
Cashel street. E. P. JERMAN, Proprietor.

## W. A. TRIBE AND CO.

Manufacturers

Of all  
Classes of  
MEN'S,  
BOYS'

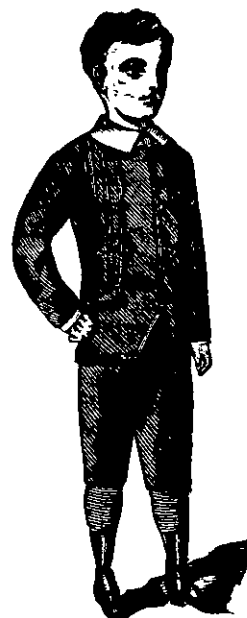
And  
JUVENILE  
CLOTHING

A  
GOOD SOLID  
TWEED SUIT

Made to  
Measure,  
42s 6d.

TROUSERS,  
14s 6d.

TROUSERS  
AND  
VEST,  
22s 6d.



219 HIGH STREET

(Next to Ashley, Berg & Co, Ironmongers),  
CHRISTCHURCH.

PLANTING SEASON, 1893.

Great Reduction in Price, owing to  
Expiration of Lease.

## KERR & BARNETT

Have on Sale—

Fruit Trees, Ornamental Trees and Shrubs.  
Contract planting done by experienced  
workmen. Contractors and large planters  
liberally dealt with. Catalogues free on  
application.

STANMORE NURSERY, Christchurch

*Jameson Anderson & Co*

*115 Colombo St*  
*Best and all the*  
*Leading Stockholders*  
*are unequalled*  
*are*  
*are*  
*are*

## A. G. T A I N E A N D C O. AUCTIONEERS, STOCK AND STATION AGENTS, WELLINGTON, NEW ZEALAND.

Sales held of Fat and Store Stock, Merchandise, and General Goods.

HORSE SALES EVERY SATURDAY.

Sheepskins, Wool, Hides, and Tallow sold Weekly.  
Correspondence invited.

## M R C. J. S H I E L D S, M. B., F. R. C. S., HAS COMMENCED PRACTICE

AT

"PUNI-WETA,"

ROSS STREET, ROSLYN.

## M R S W. W H I T L E Y UNDERCLOTHING MANUFACTURER, 145 ARMAGH STREET, CHRISTCHURCH.

Gents' Shirts Re-cuffed and Re-collared, Babies and Children  
Clothing a Specialty, Ladies' own Materials made up.  
Dressmaking at Moderate Charges.

## N O O N D A Y O I L

BRIGHT, CLEAR, STEADY LIGHT,  
Free from Fumes,  
BEST LIGHT FOR READING,  
Being Cool and Steady.

RESERVES HEALTH AND EYESIGHT.

Put up in strong tins and cases to avoid leakage,  
Fitted with improved oil faucet. Costs very little more than  
ordinary oils.

INSIST UPON HAVING "NOONDAY."