

MESSAGERIES MARITIMES.

DUNEDIN, SYDNEY, and MELBOURNE to LONDON.
Overland from MARSEILLES via PARIS, Steamers under Postal Contract with the Government of France.
Calling at MELBOURNE, ADELAIDE, KING GEORGE'S SOUND, WAHE, SUEZ, and PORT SAID.
Passengers Booked to BOMBAY, REUNION, MAURITIUS, & EAST COAST OF AFRICA

Steamers	Tons	Leave Sydney	Leave Melbourne	Leave Adelaide
Ville de la Ciotat	6428	Jan 27	Jan 31	Feb. 2
Polynesian	6428	Feb. 27	Mar. 3	Mar. 5
Armand Behic	6537	Mar. 27	Mar 31	April 2

PASSENGERS BOOKED THROUGH FROM DUNEDIN.

Rates of passage money to Marseilles, from £24 to £65, including table wines and Suez Canal dues on passengers.
RETURN TICKETS issued at the following rates:—

Available nine months	1st Class	2nd Class	3rd Class
	£105	£70	£42

Saloon Passengers booked through to London, via Paris. Best railway accommodation, luggage conveyed free, and a fortnight allowed from Marseilles en route. First-class, £70; Second-class, £50.

By special arrangement an ENGLISH INTERPRETER will attend on board upon arrival of steamer at Marseilles, to give passengers every assistance in disembarking, passing their luggage through the Customs, etc. He will also accompany them in the train to Paris and Calais.

NEILL & CO., LIMITED, Agents, Dunedin.

NORDDEUTSCHER LLOYD IMPERIAL GERMAN MAIL.



SYDNEY, MELBOURNE and ADELAIDE to SOUTHAMPTON, ANIWERP, and BREMEN,

Via Colombo and Suez Canal, Taking Passengers for London, Connecting from Alexandria by Direct Mail and Passenger Line To BRINDISI and GENOA.
Will be despatched as follows (if practicable):—

Steamers	Tons	Leave Sydney	Leave Melbourne	Leave Adelaide
Oldenburg	5318	Jan. 28	Feb. 2	Feb. 6
Hohenzollern	3288	Feb. 27	Mar. 2	Mar. 6
Prinz Regent Luitpold	6894	Mar. 27	Mar 31	April 2

And thereafter every four weeks.

Passage from Dunedin to Southampton, Antwerp, and Bremen ... £18 to £67 10s.

SPECIAL RETURN TICKETS TO EUROPE

Passages from Europe can be prepaid in the colonies.
For freight or passage apply to NEILL & CO., LIMITED, Agents, Dunedin.

SCOTT AND WILSON MANUFACTURERS OF VENETIAN BLINDS, SELF-COILING SHUTTERS.

S. & W. hold the only FIRST AWARDS at the New Zealand and South Seas Exhibition for above Manufactures.

REPAIRS IN ALL BRANCHES Promptly and thoroughly attended to.
ST. ANDREW STREET, DUNEDIN (Between George and Cumberland streets)

GO to the WEST END HAIR DRESSING SALOON for a comfortable Shave and neat Hair Cut. Best brands of Tobacco, Cigars, and Cigarettes always in Stock. Address—Opposite Zetland Arms, Cashel Street. E. P. JERMAN, Propr.

SYRUP OF SACRED BARK

This is without doubt one of the best remedies ever introduced into New Zealand for the relief and cure of Indigestion, with its accompanying symptoms of pains and fullness after meals, flatulence, constipation, biliousness, want of tone and appetite, sick headache, and the tired, listless feeling caused by a sluggish liver. It is easily taken as the dose is only a few drops and the price, 1s 6d, places it within the reach of all.



The Trade Mark has been registered and anyone infringing the same will be proceeded against.

Prepared only by THOS. JOHNSTONE, Pharmaceutical Chemist Licentiate of the Pharmaceutical Society of Ireland,

MANSE STREET, DUNEDIN.

Almanacs for 1895, with view of Dunedin, on application

BY SPECIAL APPOINTMENT



TO HER LADYSHIP THE COUNTESS OF OF GLASGOW.

PARISHOUSE, No 9 OCTAGON, LADIES' TAILORING AND FINE DRESSMAKING.

Mr BROOKS, Manager of the above Establishment, begs to inform the Ladies of Dunedin that the E-establishment is now OPEN, and will be pleased to receive an early call

In order to enable every Lady to patronise the above firm we have Reduced our Prices astonishingly. Ladies can furnish their own material, which will be made up under Mr Brooks's personal supervision for the price of 17s 6d per DRESS.

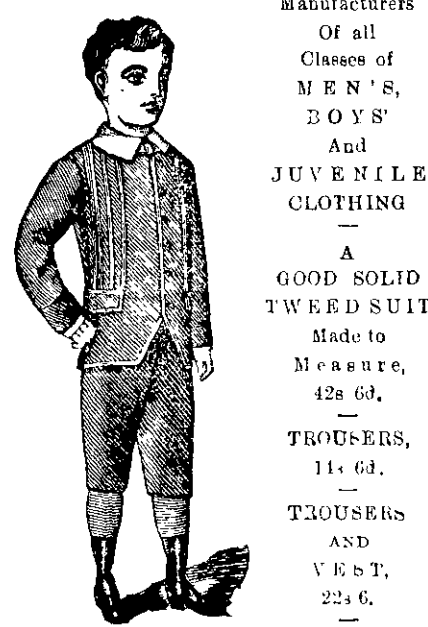
We have a choice selection of Tweeds, Serges, and Worsted, specially suited for this climate, and offer a first-class genuine Tailor-made Gown, perfect in fit, cut, and exclusive in design, from £3 10s.

Our Speciality, RIDING HABITS,

Perfect in Fit and workmanship, from £4 4s.

Mr BROOK'S ability as an expert Cutter and Fitter is well known throughout the Australian Colonies and New Zealand, and has secured him a large number of distinguished patrons—Her Ladyship the Countess of Glasgow, Lady Boyle, etc., etc.

W. A. TRIBE AND CO.



Manufacturers Of all Classes of MEN'S, BOYS' And JUVENILE CLOTHING A GOOD SOLID TWEED SUIT Made to Measure, 42s 6d. TROUSERS, 11s 6d. TROUSERS AND VEST, 22s 6d.

219 HIGH STREET (Next to Ashley, Berg & Co, Ironmongers), CHRISTCHURCH.

THE KAITANGATA RAILWAY AND COAL COMPANY, LIMITED.

THE ORIGINAL AND REAL KAITANGATA COAL.

The KAITANGATA COAL From this Company's Pit CAN BE RELIED UPON FOR SUPERIOR QUALITY And most satisfactory results, and the Public are respectfully requested to ask their Merchants for the ORIGINAL AND REAL KAITANGATA COAL.

This Company has ALWAYS KEPT FAITH WITH THE PUBLIC

In representing the Quality of its Coal, but unfortunately for this class of business they cannot guide the Public as in the case of patent medicines, where it is said that nothing is genuine except such and such is on the cork, the seal, the label, or the bottle. Consumers, however, can depend on certain characteristics—namely, that the ORIGINAL AND REAL KAITANGATA

Coal has a BRIGHT, SHINING LUSTRE, LIGHTS QUICKLY, LASTS LONG, And is thereby EASILY DISTINGUISHED from other COALS MINED IN THE DISTRICT.



UNION STEAM SHIP COMPANY OF NEW ZEALAND, LIMITED

SPECIALLY REDUCED EXCURSION FARES IN FORCE BY ALL STEAMERS OVER ALL THE COMPANY'S LINES.

Steamers will be despatched as under:

LYTTELTON and WELLINGTON—

Flora	Mon, 11th inst	3 pm. D'din
Haurato	Tues, 12th	3 35 pm. D'din
Mararoa	Thurs, 14th	2 30 train

NAPIER, GISBORNE, and AUCKLAND—

Mararoa	Thurs, 14th inst	2 30 train
Tharawa	Thurs 21st	2 30 train
Monowai	Thurs, 28th	2 30 train

SYDNEY, via WELLINGTON—

Haurato	Tues, 12th inst	3 35 pm. D'din
Taloua	Tues, 19th	2 30 train
Wakatipu	Tues 26th	3 pm. D'din

SYDNEY, via AUCKLAND—

Mararoa	Thurs, 11th inst	2 30 train
Tarawera	Thurs, 21st	2 30 train
Monowai	Thurs, 28th	2 30 train

MELBOURNE, via BLUFF and HOBART—

Monowai	Tues, 12th inst	3 35 train
Manapouri	Mon, 18th	3 35 train
Waibora	Mon, 26th	3 pm. D'din

WESTPORT, via TIMARU, AKAROA, LYTTELTON and WELLINGTON—

Omapere	Friday, 15th inst	5 pm. D'din
Conna	Friday, 22nd	5 pm. D'din

GREYMOUTH, via OAMARU, TIMARU, LYTTELTON and WELLINGTON—

Herald	About Tues, 18th	5 pm. D'din
--------	------------------	-------------

NAPIER, via OAMARU, TIMARU, and LYTTELTON—

Dingadee	About Tues 19th inst	
----------	----------------------	--

TONGA, SAMOA, FIJI, and SYDNEY—

Ovalau	About 14th inst	From Auckland
--------	-----------------	---------------

FIJI (SUVA and LEVUKA)—

Taviani	28th inst	From Auckland
---------	-----------	---------------

W. HARRIS, IMPERIAL BOOT DEPOT, 4 Prince Street.

WE respectfully beg to inform our customers and others of the arrival of our NEW SPRING AND SUMMER GOODS. Our stock has been carefully selected from the latest styles in all classes of the best English and Continental Boots, Shoes, and Evening Slippers.

PER S.S. TONGARIKO We have a second shipment of Ladies' Evening Shoes, superior in quality and style to any we have formerly had.

C. ANDERSON, SADDLER, TENT, TARPULIN, HORSE-CLOTH, AND HARNESS MAKER, Wholesale and Retail Waterproof Oil-Clothing Manufacturer—HIGH STREET, RANGIORA. Your patronage respectfully solicited.