

MESSAGERIES MARITIMES.

DUNEDIN, SYDNEY, or MELBOURNE to LONDON.

Overland from MARSEILLES via PARIS, Steamers under Postal Contract with the Government of France.

Calling at MELBOURNE, ADELAIDE, KING GEORGE'S SOUND, MAHE, SUEZ, and PORT SAID.

Passengers Booked to BOMBAY, REUNION, MAURITIUS, & EAST COAST of AFRICA

Steamers	Tons	Leave Sydney	Leave Melbourne	Leave Adelaide
Ville de la Ciota	6428	Jan. 27	Jan. 31	Feb. 2
Polynesien Arnaud	6428	Feb. 27	Mar. 3	Mar. 5
Behic	6537	Mar. 27	Mar. 31	April 2

PASSENGERS BOOKED THROUGH FROM DUNEDIN.

Extra of passage money to Marseilles, from £24 to £65, including table wines and Suez Canal dues on passengers.

RETURN TICKETS issued at the following rates:—

Available time months	1st Class	2nd Class	3rd Class
	£105	£70	£42

Faloon Passengers booked through to London, via Paris. Best railway accommodation, luggage conveyed free, and a fortnight allowed from Marseilles en route. First-class, £70; Second-class, £50.

By special arrangement an ENGLISH INTERPRETER will attend on board upon arrival of steamer at Marseilles, to give passengers every assistance in disembarking, passing their luggage through the Customs, etc. He will also accompany them in the train to Paris and Calais.

NEILL & CO., LIMITED, Agents, Dunedin.

NORDDEUTSCHER - LLOYD IMPERIAL GERMAN MAIL.



SYDNEY, MELBOURNE and ADELAIDE to SOUTHAMPTON, ANTIWERP, and BREMEN,

Via Colombo and Suez Canal, Taking Passengers for London, Connecting from Alexandria by Direct Mail and Passenger Line To BRINDISI and GENOA.

Will be despatched as follows (if practicable):—

Steamers	Tons	Leave Sydney	Leave Melbourne	Leave Adelaide
Oldenburg	5318	Jan. 28	Feb. 2	Feb. 6
Hobenzollern	3288	Feb. 27	Mar. 2	Mar. 6
Prinz Regent Luitpold	6891	Mar. 27	Mar. 31	April 2

And thereafter every four weeks.

Passage from Dunedin to Southampton, Antwerp, and Bremen ... £18 to £67 10s.

SPECIAL RETURN TICKETS TO EUROPE Passages from Europe can be prepaid in the colonies.

For freight or passage apply to NEILL & CO., LIMITED, Agents, Dunedin.

LANGLEY (Late Oxford Terrace), MILITARY HAIRDRESSER and TOBACCONIST, 126 Colombo Street (near Massey, Struthers and Co.), Christchurch.

GO to the WEST END HAIR-DRESSING SALOON for a comfortable Shave and neat Hair Cut. Best brands of Tobacco, Cigars, and Cigarettes always in Stock. Address—Opposite Zealand Arms, Cassel Street. E. P. JERMAN, Propr.

NEW ZEALAND LOAN AND MERCANTILE AGENCY COMPANY, LIMITED.

The Company has pleasure in intimating that, the necessary arrangements having been completed, the Company has now RESUMED BUSINESS as

- STOCK AND STATION AGENTS
- WOOL AND PRODUCE BROKERS
- FINANCIAL AGENTS
- GENERAL COMMISSION AGENTS.

In making this announcement the Company embraces this opportunity of gratefully acknowledging the support received from many old and new clients since July last.

Special attention is directed to the provision made in the Articles of Association of the New Company for the absolute safety of Proceeds of all Consignments.

ANDREW TODD, Manager.

BY SPECIAL APPOINTMENT



TO HER LADYSHIP THE COUNTESS OF OF GLASGOW.

PARISHOUSE, NO 9 OCTAGON, LADIES' TAILORING AND FINE DRESSMAKING.

Mr BROOKS, Manager of the above Establishment, begs to inform the Ladies of Dunedin that the Establishment is now OPEN, and will be pleased to receive an early call.

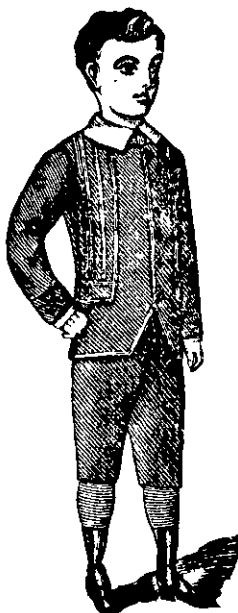
In order to enable every Lady to patronise the above firm we have reduced our Prices astonishingly. Ladies can furnish their own material, which will be made up under Mr Brooks's personal supervision for the price of 17s 6d per DRESS.

We have a choice selection of Tweeds, Serges, and Worsteds, specially suited for this climate, and offer a first-class genuine Tailor-made Gown, perfect in fit, cut, and exclusive in design, from £3 10s.

Our Speciality, RIDING HABITS, Perfect in Fit and workmanship, from £4 4s.

Mr BROOK'S ability as an expert Cutter and Fitter is well known throughout the Australian Colonies and New Zealand, and has secured him a large number of distinguished patrons—Her Ladyship the Countess of Glasgow, Lady Boyle, etc., etc.

W. A. TRIBE AND CO.



Manufacturers Of all Classes of MEN'S, BOYS' And JUVENILE CLOTHING — A GOOD SOLID TWEED SUIT Made to Measure, 42s 6s. — TROUSERS, 14s 6d. — Trousers AND VEST, 22s 6s.

219 HIGH STREET (Next to Ashley, Berg & Co, Ironmongers), CHRISTCHURCH.

CRITERION HOTEL PRINCES STREET, DUNEDIN.

JAMES LISTON ... Proprietor (Late of the Douglas Hotel).

Having purchased the lease and good-will of the above popular and centrally-situated Hotel, J. L. hopes, by strict attention to the comfort of his boarders, travellers, and the public in general, and having made several necessary alterations, to meet with a fair share of the public patronage.

Suites of rooms for Families. Terms strictly moderate.

A Special feature, is LUNCHEON from 12 to 2 o'clock.

Hot, Cold and Shower Baths, The very best of Wines, Ales, and Spirits kept in stock.

Two of Alcock's best Billiard Tables. A Night Porter in attendance.

JAMES LISTON.



UNION STEAM SHIP COMPANY OF NEW ZEALAND, LIMITED

The above Company will despatch steamers as under:—

FOR LYTELTON, WELLINGTON, — WAAATIPU, s.s., on Monday, January 21. Passengers from Dunedin by 2.30 p.m. train. NELSON (transhipping at Wellington) WAKATIPU s.s., on Monday, January 21. Passengers from Dunedin by 2.30 p.m. train.

FOR AUCKLAND, VIA LYTELTON WELLINGTON, NAPIER, and GISBORNE—ROTOHAHANA s.s., on Thursday January 24. Passengers from Dunedin wharf at 3 p.m.

FOR NAPIER WHARF, VIA OAMARU, TIMARU, and LYTELTON—A Steamer early.

FOR SYDNEY, VIA LYTELTON, WELLINGTON, AND AUCKLAND — ROTOHAHANA, s.s., on Thursday, January 17. Passengers from Dunedin wharf at 3 p.m.

FOR MELBOURNE, VIA BLUFF AND HOBART—TALUNE, s.s., on Monday, Jan. 12. Passengers from Dunedin by 2.20 p.m. train.

FOR SYDNEY, VIA LYTELTON AND WELLINGTON — WAKATIPU s.s., on Monday January 21. Passengers from Dunedin 2.30 p.m. train.

FOR WESTPORT, VIA TIMARU, AKAROA, LYTELTON, WELLINGTON—BEUNNER — s.s., on Friday, January 25. Passengers from Dunedin Wharf at 5 p.m. Cargo till 1 p.m.

FOR GREYMOUTH AND HOKITIKA, VIA OAMARU, TIMARU, LYTELTON, and WELLINGTON—HERALD, s.s., about Wednesday, January 23. Passengers from Dunedin Wharf at 10 p.m. Cargo till 3 p.m.

FOR FIJI, from AUCKLAND.—TAVIUNI s.s., about Thursday, January 31.

FOR TONGA SAMOA and SYDNEY, from AUCKLAND.—UPOLU, about 14th Feb.

OFFICES: Corner Vogel, Water, and Cumberland street.

SADDLER, TENT, TAPPAULIN, HORSE-CLOTH, AND HARNISS MAKER, Wholesale and Retail Waterproof Oil-Clothing Manufacturer, HIGH STREET, RANGIORA. Your patronage respectfully solicited.

C. ANDERSON.

M. J. REDDINGTON,

Fruiterer and Confectioner, 143 Lower High Street, Christchurch.—TABLET readers are requested not to forget that the choicest Fruits in Season are always obtainable at this address. Orders punctually attended to, and your patronage respectfully solicited.