



ROYAL MATTIE.

P.G. 38/778.

F.P. Class $\frac{29}{24} \frac{M}{I} \frac{0}{0}$



SMITH, ROLAND STAVERS.

P.G. 38/695.

F.P. Class $\frac{28}{32} \frac{II}{II} \frac{O?}{M}$



STEVENS, ROY WATSON.

P.G. 38/708.

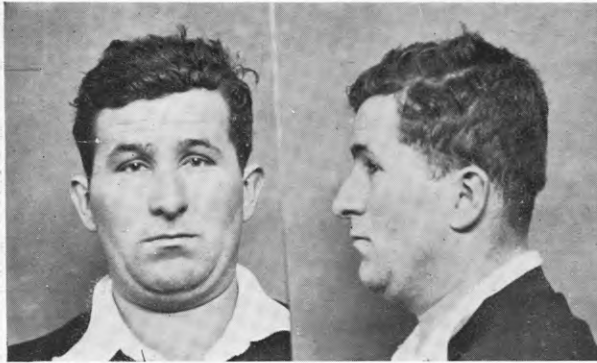
F.P. Class $\frac{25}{17} \frac{I}{OO} \frac{0}{15}$



STICKINGS, ARTHUR VINCENT.

P.G. 38/770.

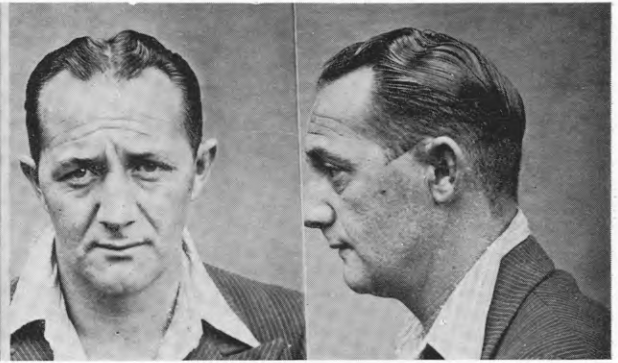
F.P. Class $\frac{1}{1} \frac{R}{Ra} \left(\frac{11}{1} \right) \frac{19}{1}$



STOKES, FRANCIS FRANK, *alias* STOKES, FRANK.

P.G. 33/635.

F.P. Class $\frac{9}{2} \frac{R}{R} \frac{IO}{OI} \frac{15}{14}$



THOMAS, GEORGE WILLIAM.

P.G. 38/771.

F.P. Class $\frac{22}{17} \frac{O}{IO} \frac{O}{16}$



WALLS, KEITH EDWARD.

P.G. 38/728.

F.P. Class $\frac{14}{14} \frac{R}{R} \frac{O}{OO} \frac{22}{0}$



WILLIAMS, RAYMOND GEORGE.

P.G. 38/647.

F.P. Class $\frac{1}{1} \frac{U}{R} \frac{II}{II} \frac{10}{2}$