

COX, CHARLES HENRY, *alias* CLARK, *alias* COOK, *alias* MACKIE, CHARLES GEORGE HENRY, ETC.
P.G. 39/224. F.P. Class $\frac{21}{17}$ $\frac{1}{00}$ $\frac{0}{11}$

CRAWFORD, JOHN ARTHUR, *alias* CRAWFORD, VICTOR JAMES, *alias* COLLINS, JOHN, *alias* COLLINS, VICTOR.
P.G. 39/331. F.P. Class $\frac{29}{32}$ $\frac{M0}{0}$ $\frac{0}{0}$



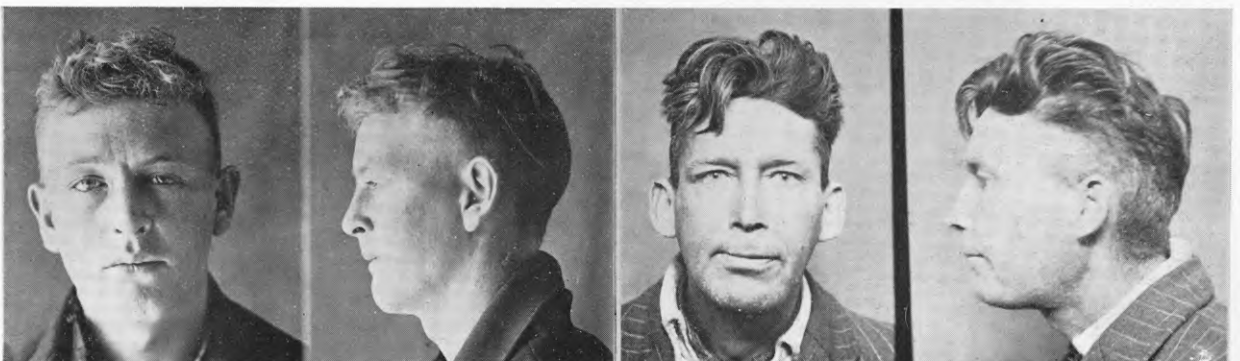
CROWLEY, STEPHEN GREGORY or STEPHEN GEORGE.
P.G. 39/188. F.P. Class $\frac{31}{19}$ $\frac{M}{01}$ $\frac{0}{13}$

DIXON, FRANK, *alias* SCOTT, TONY.
P.G. 39/312. F.P. Class $\frac{17}{17}$ $\frac{0}{00}$ $\frac{0}{19}$



EATHORNE, JAMES DUNCAN.
P.G. 39/331. F.P. Class $\frac{13}{19}$ $\frac{Rr}{Or}$ $\left(\frac{01}{0}\right)$ $\frac{M}{20}$

EDWARDS, NICHOLAS CHARLES.
P.G. 32/726. F.P. Class $\frac{27}{28}$ $\frac{00}{11}$ $\frac{0}{16}$



FAIRBROTHER, ALAN GILES PETER, *alias* JACKSON, ROY.
P.G. 38/790. F.P. Class $\frac{1}{1}$ $\frac{U}{U}$ $\frac{II}{II}$ $\frac{22}{4}$

FISHER, DAVID, *alias* FISHER, WALTER DAVID.
P.G. 39/311. F.P. Class $\frac{1}{3}$ $\frac{R}{0}$ $\frac{00}{0}$ $\frac{25}{19}$