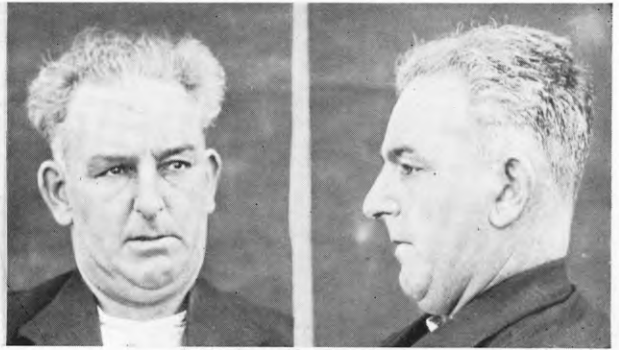


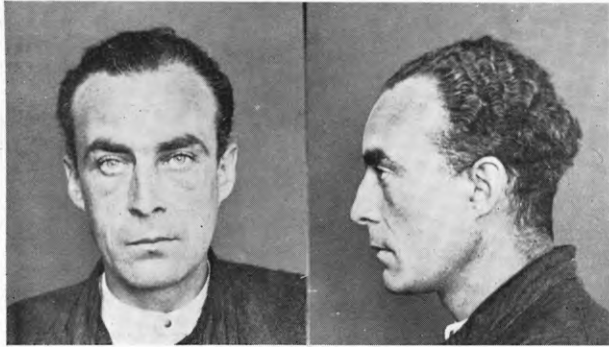
FERGUSON, WILLIAM CLARKE.

P.G. 37/814 F.P. Class  $\frac{1}{9}$   $\frac{R}{R}$   $\frac{O}{OO}$   $\frac{23}{18}$  or  $\frac{17}{9}$   $\frac{IM}{R}$   $\frac{23}{18}$



FOSTER, THEODORE.

P.G. 37/807. F.P. Class  $\frac{1}{1}$   $\frac{R}{R}$   $\frac{IO}{IO}$   $\frac{17}{10}$



GIBBONS, JAMES.

P.G. 37/700. F.P. Class  $\frac{1}{1}$   $\frac{R}{U}$   $\frac{OO}{IO}$   $\frac{11}{14}$



GUILFORD, FRANCIS HENRY GORDON, *alias* GUILFORD, FRANK, *alias* GORDON, FRANK, *alias* CLARKE, JAMES FREDERICK.

P.G. 37/805. F.P. Class  $\frac{29}{3}$   $\frac{M}{I}$   $\frac{14}{12}$



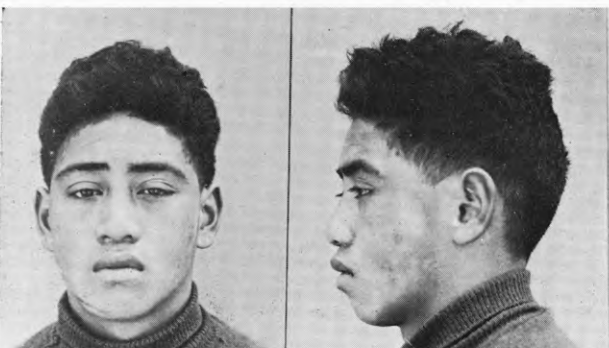
HILL, MAVIS, *alias* GOOD.

P.G. 37/827. F.P. Class  $\frac{21}{19}$   $\frac{I}{O}$   $\frac{0}{17}$



JUDSON, PHYLLIS MAUD.

P.G. 37/792. F.P. Class  $\frac{32}{24}$   $\frac{I}{OM}$   $\frac{0}{M}$



KARAPA, BOB, *alias* KARAPA, BERT, *alias* POUKI KAIWAI.

P.G. 37/790. F.P. Class  $\frac{28}{32}$   $\frac{MO}{IM}$   $\frac{0}{0}$



KEPA, WILLIAM or BILL, *alias* KEEPAP.

P.G. 37/335. F.P. Class  $\frac{15}{2}$   $\frac{U}{U}$   $\frac{OO}{O}$   $\frac{16}{16}$  or  $\frac{15}{4}$   $\frac{OO}{II}$   $\frac{16}{16}$