

# NEW ZEALAND POLICE GAZETTE.

PUBLISHED BY AUTHORITY.

## PRISONERS' PHOTOGRAPHS.

WELLINGTON, WEDNESDAY, OCTOBER 7, 1936.



ALEXANDER, MAURICE EDWARD.

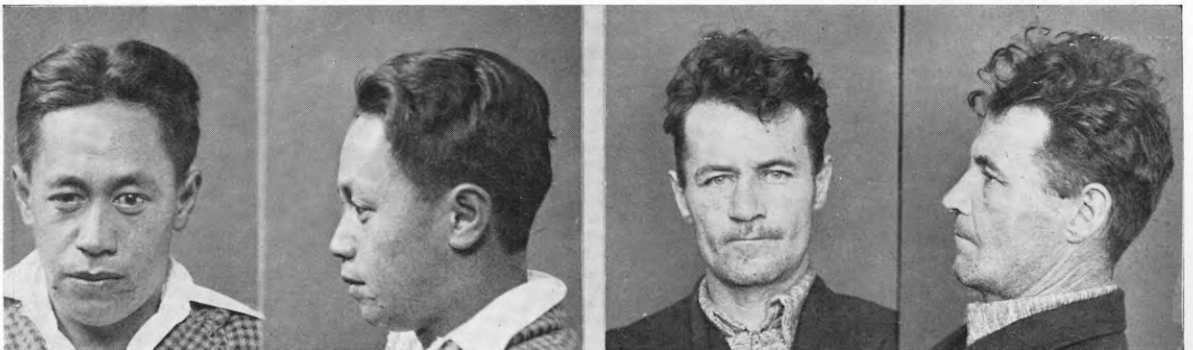
P.G. 36/531.

F.P. Class  $\frac{1}{1}$  R  $\frac{11}{11}$   $\frac{15}{11}$

ALLEN, GEORGE EDWARD, alias ALLAN.

P.G. 36/546.

F.P. Class  $\frac{25}{13}$   $\frac{11}{00}$



BEATTIE, JAMES HENRY.

P.G. 36/545.

F.P. Class  $\frac{32}{22}$   $\frac{0}{0}$

BILLING, JAMES.

P.G. 36/532.

F.P. Class  $\frac{29}{18}$   $\frac{1}{00}$  10.