



DYNES, FRANCIS MICHAEL.

P.G. 35/583.

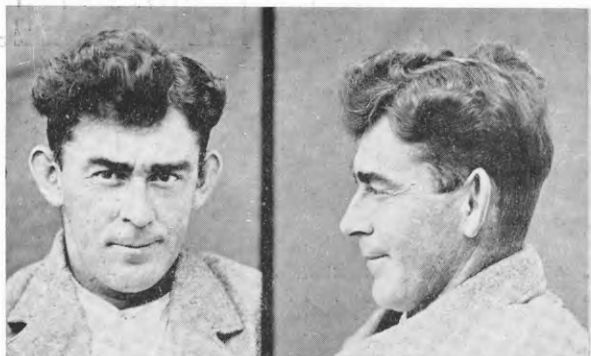
F.P. Class $\frac{1}{1}$ $\frac{Ata^t}{Ra^t}$ $\left(\frac{\cdot\cdot}{I}\right)$ $\frac{14}{10}$



EDLIN, HORACE RAYMOND, alias GRANT, NORMAN.

P.G. 35/583.

F.P. Class $\frac{1}{1}$ $\frac{U}{R}$ $\frac{II}{II}$ $\frac{13}{9}$



ELLISON, LEO PATRICK.

P.G. 35/454.

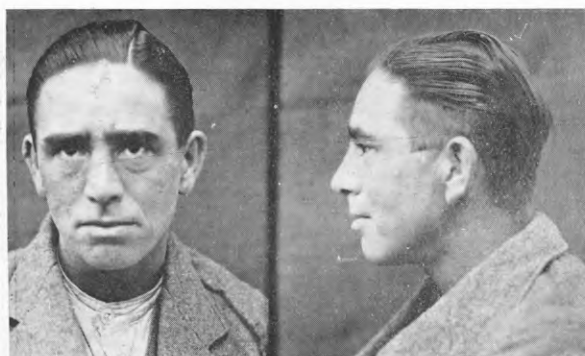
F.P. Class $\frac{25}{20}$ $\frac{I}{M}$ 17 or $\frac{25}{28}$ $\frac{IO}{M}$ 17.



FRANKS, LILLIAN KATHERINE.

P.G. 35/609.

F.P. Class $\frac{27}{28}$ $\frac{OM}{II}$ 14.



GRAVES, JOHN WILLIAM, alias GREAVES.

P.G. 35/353.

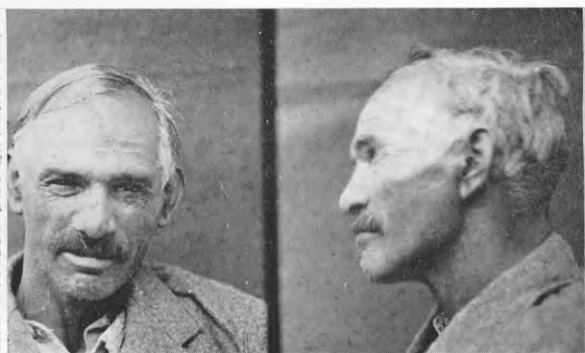
F.P. Class $\frac{9}{1}$ $\frac{U}{U}$ $\frac{IO}{IO}$ $\frac{12}{16}$



HULME, ROBERT, alias STONE, alias KELLY.

P.G. 35/611.

F.P. Class $\frac{1}{1}$ $\frac{aAa}{aAa}$ $\left(\frac{\cdot\cdot}{\cdot\cdot}\right)$



KELLY, HENRY.

P.G. 34/545.

F.P. Class $\frac{11}{10}$ $\frac{U}{U}$ $\frac{0}{0}$ $\frac{15}{14?}$



KNOPP, CHARLES CLIFFORD.

P.G. 35/424.

F.P. Class $\frac{25}{28}$ $\frac{IO}{I}$ 20