



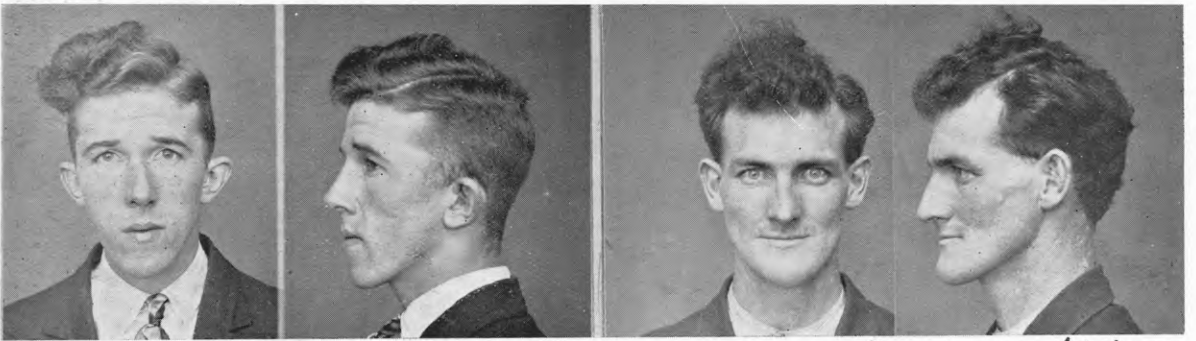
MONTAGUE, GEORGE STEPHEN, alias MONTAGUE, ALLAN LUKE LANGE, alias LENNON, GEORGE.  
P.G. 32/373. F.P. Class  $\frac{5}{1} \frac{A}{Ar} \left( \frac{00}{10?} \right) \frac{18}{16}$

MULHANE, HAROLD VICTOR.  
P.G. 32/623. F.P. Class  $\frac{13}{21} \frac{R}{R} \frac{11}{10}$



MUNDY, WILLIAM CHARLES.  
P.G. 32/588. F.P. Class  $\frac{17}{1} \frac{I}{IO} \frac{15}{10}$

MURPHY, CHANEL PATRICK.  
P.G. 32/470. F.P. Class (not recorded).



MURRAY, FREDERICK JOHN.  
P.G. 32/584. F.P. Class  $\frac{1}{1} \frac{U}{U} \frac{IO}{IO} \frac{23}{7}$

*Dead 22/6/55*  
MURRAY, NORMAN JOHN.  
P.G. 32/434. F.P. Class  $\frac{25}{4} \frac{O}{I} \frac{15}{8}$



McAULIFFE, JOHN.  
P.G. 32/589. F.P. Class  $\frac{25}{10} \frac{OMr}{U} \left( \frac{OM}{OO} \right) \frac{20}{7}$

McAULIFFE, MICHAEL, alias FULLARTON, MARTIN.  
P.G. 32/589. F.P. Class  $\frac{1}{1} \frac{Ur}{U} \left( \frac{OI}{OI} \right) \frac{10}{8}$