

SINCLAIR, DUNCAN EWEN.

P.G. 32/180.

F.P. Class  $\frac{1}{17} \frac{U}{Rr} \left( \frac{II}{II} \right) 5.$

SMITH, OSWALD PERCY.

P.G. 31/740.

F.P. Class  $\frac{9}{U} \frac{OO}{OO} \frac{11}{7}$



SPENCER, BERNARD SIDNEY, alias SPITZEL, SIDNEY.

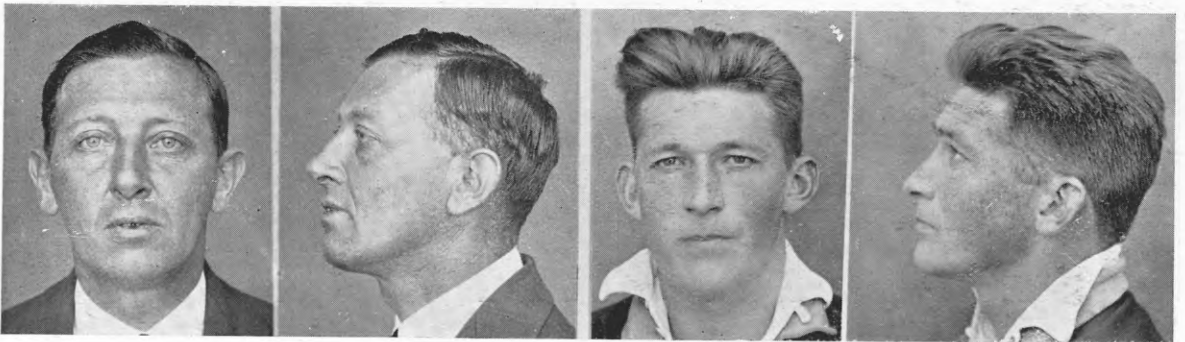
P.G. 32/200.

F.P. Class  $\frac{17}{1} \frac{I}{OO} \frac{9}{15}$

TAKA PENE MANUERA, alias MANUELS, STEWART.

P.G. 31/605.

F.P. Class  $\frac{31}{28} \frac{OM}{II} 9.$



TERRY, JOHN HOWARD.

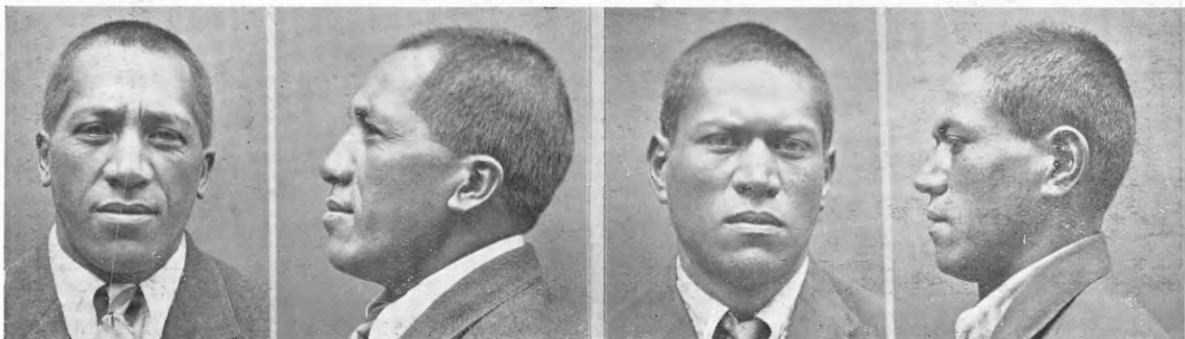
P.G. 32/201.

F.P. Class  $\frac{27}{4} \frac{I}{II} \frac{25}{11}$

THOMPSON, WILLIAM BERNARD.

P.G. 32/181.

F.P. Class  $\frac{25}{1} \frac{I}{OO} \frac{23}{13}$



TINI HOTENE, alias TINO HORO.

P.G. 31/739.

F.P. Class  $\frac{32}{32} \frac{OO}{II}$

TIPENE, JOHN.

P.G. 31/739.

F.P. Class  $\frac{32}{24} \frac{I}{OO} ?$