

SEMB, REGINALD MERTON, alias SIM, REGINALD.  
P.G. 30/475.

F.P. Class  $\frac{5}{19}$   $\frac{R}{U}$   $\frac{OI}{I}$  21.

SMITH, WALTER.  
P.G. 31/338.

F.P. Class  $\frac{1}{1}$   $\frac{U}{U}$   $\frac{OO}{OO}$   $\frac{24}{5}$



P.G. 31/338.

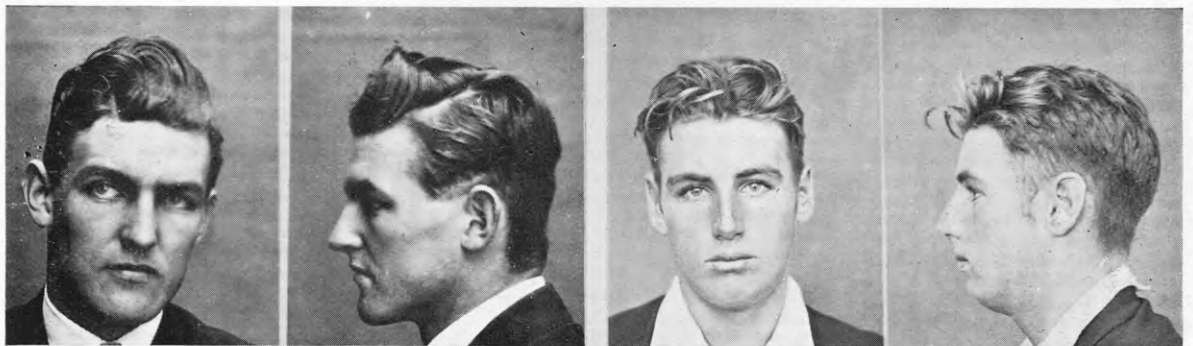
TAKARE TOHU.

F.P. Class  $\frac{1}{17}$   $\frac{R}{U}$   $\frac{OI}{OI}$  12.

P.G. 31/365.

TAPP, ERIC PHILLIP.

F.P. Class  $\frac{27}{12}$   $\frac{II}{IO}$   $\frac{28}{18}$



P.G. 31/251.

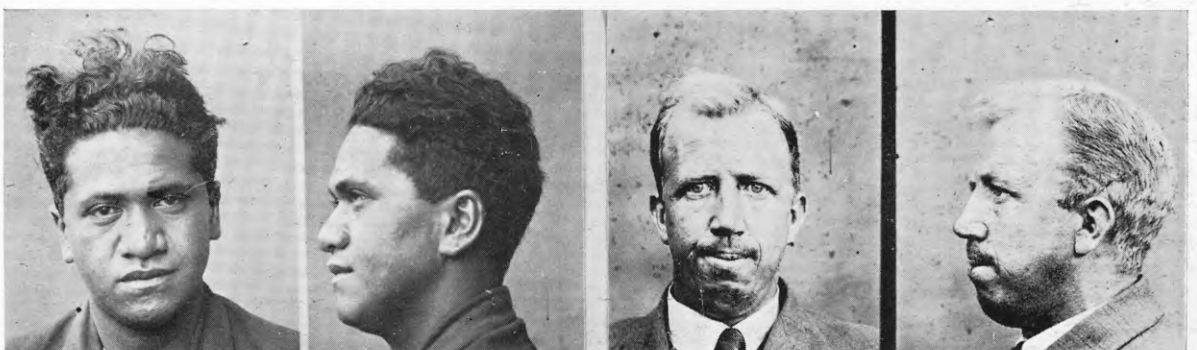
THOMS, WILLIAM GLADSTONE.

F.P. Class  $\frac{1}{1}$   $\frac{A}{A}$   $\left(\frac{10}{10}\right)$   $\frac{18}{5}$

P.G. 29/333.

VERCOE, GEORGE.

F.P. Class  $\frac{9}{3}$   $\frac{R}{M}$   $\frac{OI}{I}$   $\frac{24}{14}$



P.G. 31/150.

WAATA TIMOKO.

F.P. Class  $\frac{31}{32}$   $\frac{IM?}{M?I}$

WALLACE, JAMES WILLIAMSON, alias WATSON, JACK.  
P.G. 31/326.

F.P. Class  $\frac{1}{17}$   $\frac{A}{Ua}$   $\left(\frac{I}{I}\right)$  11.