



BURTON, CECIL EDWARD FRANCIS.  
P.G. 30/72. F.P. Class  $\frac{26}{24}$   $\frac{I}{M}$



BYTHELL, ERIC KENWORTHY.  
P.G. 31/193. F.P. Class  $\frac{1}{1}$   $\frac{A^t}{A}$   $\left(\frac{10}{10}\right)$   $\frac{14}{13}$



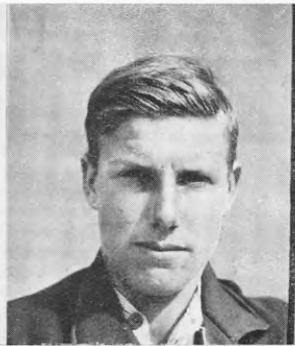
CLAPHAM ROBERT HALE.  
P.G. 31/168. F.P. Class  $\frac{25}{17}$   $\frac{M}{R}$   $\frac{22}{10}$



CLARKE, DAVID ROBERT.  
P.G. 30/738. F.P. Class  $\frac{9}{3}$   $\frac{R}{I}$   $\frac{OO}{O}$   $\frac{10}{13}$



COLMAN, ETHELBERT.  
P.G. 31/124. F.P. Class  $\frac{9}{1}$   $\frac{R}{U}$   $\frac{OO}{OO}$   $\frac{14}{8}$



COOPER, MERVYN JAMES.  
P.G. 27/6E9. F.P. Class  $\frac{9}{1}$   $\frac{Ra}{U}$   $\left(\frac{1}{II}\right)$   $\frac{25}{9}$



CORNWALL, JOHN.  
P.G. 31/207. F.P. Class  $\frac{14}{21}$   $\frac{U}{U}$   $\frac{OO}{OO}$



DE ROO, LEOPOLD BENJAMIN ALEXANDER.  
P.G. 31/194. F.P. Class  $\frac{13}{1}$   $\frac{U}{U}$   $\frac{OI}{OO}$   $\frac{26}{16}$