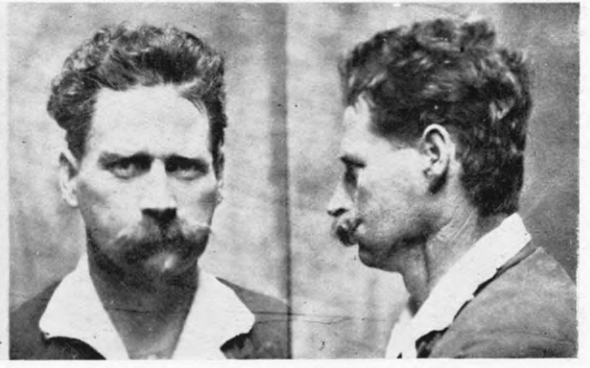




FABER, SYDNEY CLIFFORD.

P.G. 30/401.

F.P. Class  $\frac{13}{22}$   $\frac{R}{U}$   $\frac{OO}{OO}$



FORD, JOSEPH, alias FORD, JOHN.

P.G. 30/428.

F.P. Class  $\frac{31}{32}$   $\frac{II}{MI}$

*Deceased 26/2/47.*



GAY, CEDRIC MAITLAND.

P.G. 30/429.

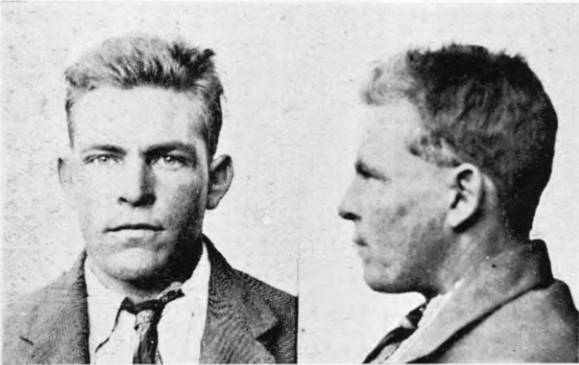
F.P. Class  $\frac{1}{1}$   $\frac{U}{U}$   $\frac{OO}{IO}$   $\frac{20}{10}$



GILLAM, CHARLES VIVIAN.

P.G. 30/488.

F.P. Class  $\frac{1}{1}$   $\frac{At}{R}$   $\frac{I}{IO}$   $\frac{24}{5}$



GOLDSMITH, WILLIAM EDWARD ALAN.

P.G. 30/497.

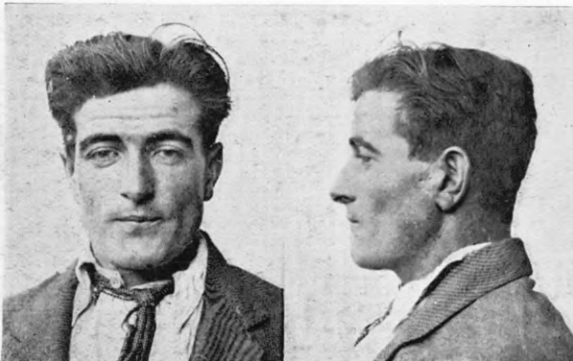
F.P. Class  $\frac{9}{17}$   $\frac{R}{U}$   $\frac{OI}{II}$  6.



GOODISON, THOMAS ROBERT, alias GOODISSON.

P.G. 30/416.

F.P. Class  $\frac{1}{1}$   $\frac{R}{aR}$   $\frac{II}{II}$   $\frac{18}{7}$



HALLIDAY, THOMAS DAVID CHARLES.

P.G. 30/416.

F.P. Class  $\frac{25}{17}$   $\frac{I}{OO}$  20.



HALLIDAY, WILLIAM RICHARD JOHN.

P.G. 30/416.

F.P. Class  $\frac{17}{3}$   $\frac{I}{M}$   $\frac{20}{16}$