



LEEDS, WILLIAM BLACKWOOD.

P.G. 27/836.

F.P. Class  $\frac{25}{27}$   $\frac{OM}{I}$  17.



LEVENE, WILLIAM.

P.G. 27/329.

F.P. Class  $\frac{13}{17}$   $\frac{R}{R}$   $\frac{OI}{OO}$  16.



LINCOLN, ALBERT EDWARD.

P.G. 28/25.

F.P. Class  $\frac{23}{26}$   $\frac{IM}{R}$   $\frac{O}{O}$  17.



LOGAN, BERNARD.

P.G. 27/833.

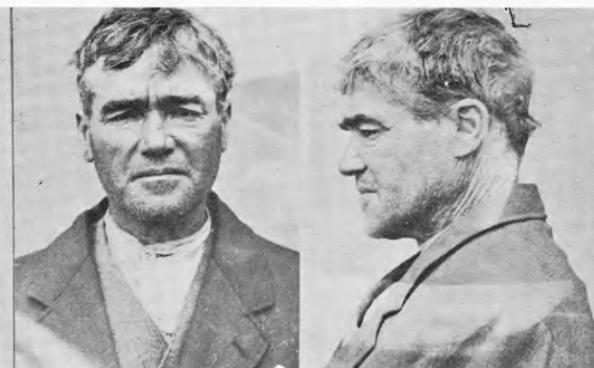
F.P. Class  $\frac{32}{32}$   $\frac{OI}{OI}$



MAGNEIL, JOHN FRANCIS.

P.G. 27/658.

F.P. Class  $\frac{1}{1}$   $\frac{R}{U}$   $\frac{II}{OO}$   $\frac{20}{6}$



MANGAN, PATRICK, alias MANGIN, alias MANAGAN, MICHAEL.

P.G. 27/330.

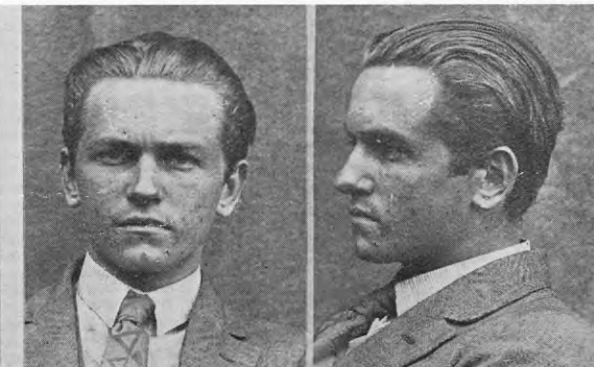
F.P. Class  $\frac{5}{17}$   $\frac{R}{R}$   $\frac{II}{OI}$  18.



MANN, ALICE MYRA, alias WALL.

P.G. 28/70.

F.P. Class  $\frac{1}{1}$   $\frac{R}{U}$   $\frac{IO}{OO}$   $\frac{19}{11}$



MARTIN, WILLIAM HENRY.

P.G. 28/67.

F.P. Class  $\frac{25}{19}$   $\frac{I}{O}$  15.