



JOHNSON, JAMES WILLIAM ARTHUR.
P.G. 28/437. F.P. Class $\frac{1}{1}$ $\frac{R}{At}$ $\frac{II}{I}$ $\frac{16}{6}$



KEENE, GORDON LEWIS.
P.G. 28/439. F.P. Class $\frac{27}{16}$ $\frac{IO}{IM}$



KELLY, JOSEPH.
P.G. 28/393. F.P. Class $\frac{17}{1}$ $\frac{M}{OO}$ $\frac{14}{13}$



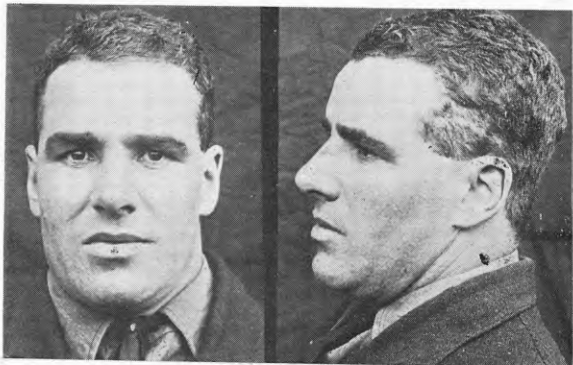
KNIGHT, ARTHUR.
P.G. 26/706. F.P. Class $\frac{13}{27}$ $\frac{R}{I}$ $\frac{O}{1}$ $\frac{16}{16}$



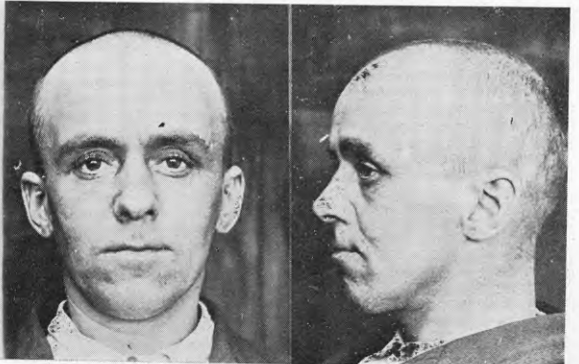
KURAKURA RURA.
P.G. 28/437. F.P. Class $\frac{32}{32}$ $\frac{IM?}{M?I}$



LEE, CHARLIE, alias AH LEE.
P.G. 28, 435. F.P. Class $\frac{28}{16}$ $\frac{MM}{IM}$



LENNE, ARTHUR ALEXANDER.
P.G. 28/436. F.P. Class $\frac{27}{24}$ $\frac{I}{MI}$



LUNT, FRANK.
P.G. 28/425. F.P. Class $\frac{3}{10}$ $\frac{R}{R}$ $\frac{O}{O}$ $\frac{16}{15}$