



JOHNS, ARTHUR ERNEST.

P.G. 27/136.

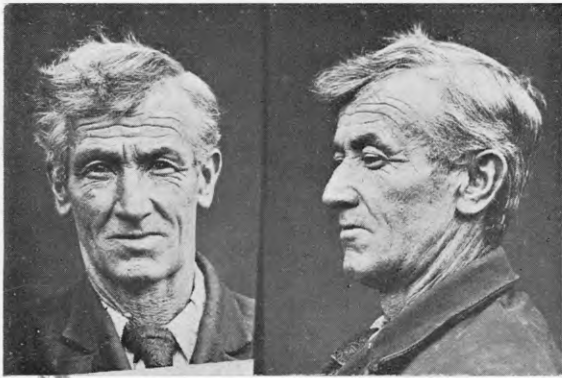
F.P. Class $\frac{1}{17}$ $\frac{U}{R}$ $\frac{II}{11}$ 13.



JONG, alias LEE CHUN.

P.G. 27/51.

F.P. Class $\frac{32}{22}$ $\frac{I}{At}$



KELLY, ALFRED WILLIAM JOHN.

P.G. 23/410.

F.P. Class $\frac{1}{1}$ $\frac{Ur}{Ur}$ $\left(\frac{II}{11}\right)$ 8.



KIRK, CHARLES ARTHUR.

P.G. 26/475.

F.P. Class $\frac{1}{1}$ $\frac{U}{U}$ $\frac{II}{OI}$ $\frac{15}{14}$



LEE PAK WAH.

P.G. 27/83.

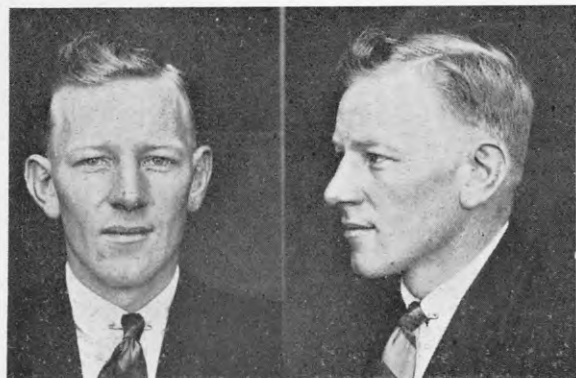
F.P. Class $\frac{25}{23}$ $\frac{O}{I}$



LILLY, CHARLES OLIVER.

P.G. 27/136.

F.P. Class $\frac{13}{18}$ $\frac{R}{A}$ $\left(\frac{IO}{O}\right)$ 11.



LIPSCOMBE, THEODORE STANLEY.

P.G. 27/120.

F.P. Class $\frac{1}{1}$ $\frac{At}{At}$ $\left(\frac{II}{O}\right)$ $\frac{21}{12}$



MADSEN, THOMAS WILLIAM.

P.G. 26/264.

F.P. Class $\frac{27}{12}$ $\frac{MI}{II}$ $\frac{14}{1}$