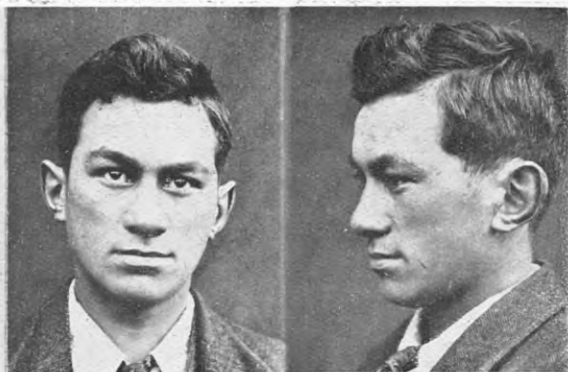




EDMONDS, ZULU, alias EDMONDS, LULU.

P.G. 24/654.

F.P. Class $\frac{13}{17} \frac{A}{A} \left(\frac{1}{10} \right)$ 5.



GENTRY, WILLIAM LEWIS.

P.G. 24/717.

F.P. Class $\frac{1}{1} \frac{U}{At} \left(\frac{00}{1} \right)$ 9.



GLOVER, TOM ROBERT.

P.G. 24/691.

F.P. Class $\frac{1}{1} \frac{U}{R} \frac{00}{11}$ 12.



GOODWIN, FRANCIS.

P.G. 24/629.

F.P. Class $\frac{9}{10} \frac{U}{U} \frac{1}{00}$ 10.



HAMMOND, KENNETH ALFRED.

P.G. 24/718.

F.P. Class $\frac{9}{24} \frac{R}{O} \frac{00}{O}$



HAPI TUTAKI.

P.G. 24/719.

F.P. Class $\frac{27}{12} \frac{10}{11}$ 12.



HOOD, LIONEL GEORGE.

P.G. 23/490.

F.P. Class $\frac{1}{1} \frac{Ua}{A2a} \left(\frac{1}{\dots} \right)$ 7.



HOSKYN, CHARLES DUNSTAN, alias HOSKYN, CHARLES DONALD.

P.G. 24/705.

F.P. Class $\frac{17}{11} \frac{11}{O}$ 19.