

LUTTRELL, EDWIN ESMOND RODBOURNE, alias LUTTRELL, JOHN.

P.G. 24/535.

F.P. Class $\frac{29}{24} \frac{I}{M}$



MACALEESE, MACARTEN.

P.G. 24/496.

F.P. Class $\frac{1}{1} \frac{U_a}{U_a} \left(\frac{I}{I} \right) 8.$



MARTIN, RUSSELL DYTES.

P.G. 24/486.

F.P. Class $\frac{29}{25} \frac{IM}{OO} 18.$



MATEKAIROA PANIKENA.

P.G. 24/582.

F.P. Class $\frac{31}{28}$ or $\frac{32}{28} \frac{MO}{OI} 13.$



MATTHEWS, JOHN SELWYN.

P.G. 24/569.

F.P. Class $\frac{31}{32} \frac{MI}{IO}$



MONTAGUE, JOHN.

P.G. 24/561

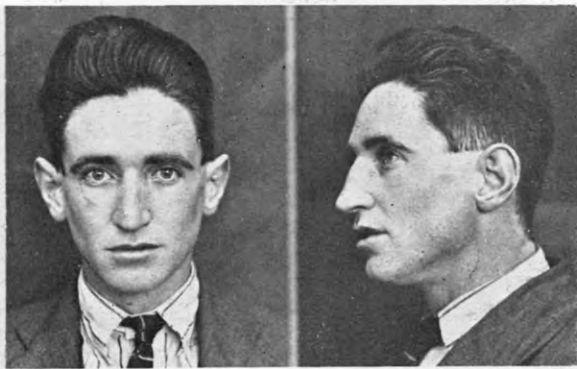
F.P. Class $\frac{1}{1} \frac{A_a}{A_a} \left(\frac{I}{I} \right) 2.$



MCCULLAGH, ARTHUR ERNEST.

P.G. 24/556.

F.P. Class $\frac{27}{24} \frac{O}{II}$



McDOWELL, PATRICK, alias DELANEY, THOMAS, alias FERGUSON, DAVID, &c.

P.G. 24/560.

F.P. Class $\frac{9}{1} \frac{U}{U} \frac{II}{II} 5.$