

DAY, HENRY LANGSTON, alias DAY, HERBERT LANGSTON.

P.G. 24/206.

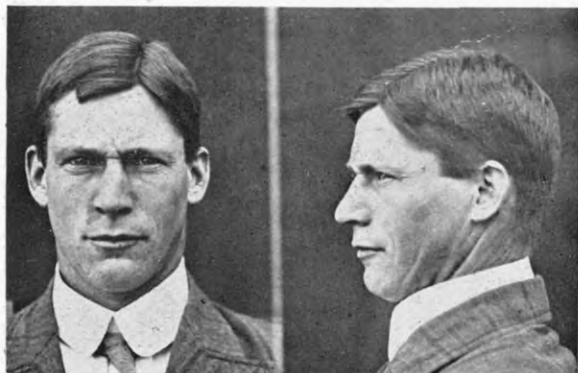
F.P. Class $\frac{31}{28}$ $\frac{MO}{OO}$ 16.



EDLIN, ARTHUR GEORGE.

P.G. 24/519.

F.P. Class $\frac{1}{17}$ $\frac{Aa}{Aa}$ $\left(\frac{I}{I}\right)$ 16.



ELLIS, FREDERICK, alias JOHNSTON, FRANK, alias WILSON, FRANK, &c.

P.G. 24/164.

F.P. Class $\frac{31}{32}$ $\frac{II}{OI}$



FINDLAY, NORMAN LEONARD, alias GREY, GEORGE.

P.G. 24/535.

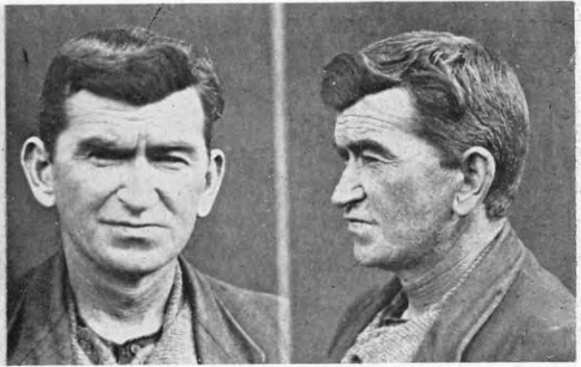
F.P. Class $\frac{25}{2}$ $\frac{M}{II}$ 12.



FOLEY, SYDNEY JAMES, alias SNOW.

P.G. 18/324.

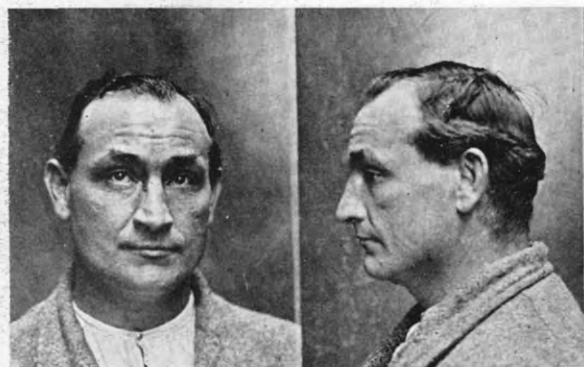
F.P. Class $\frac{1}{1}$ $\frac{A}{U}$ $\left(\frac{I}{IO}\right)$ 6.



FORD, JAMES FRANCIS.

P.G. 24/535.

F.P. Class $\frac{1}{1}$ $\frac{A}{Ar}$ $\left(\frac{II}{I}\right)$ 2.



GARLICK, FREDERICK ROBERT.

P.G. 22/670.

F.P. Class $\frac{1}{17}$ $\frac{Rr}{R}$ $\left(\frac{OI}{OI}\right)$ 11.



GILLESPIE, ALBERT STANLEY.

F.P. 24/592.

F.P. Class $\frac{1}{17}$ $\frac{Ur}{R}$ $\left(\frac{II}{II}\right)$ 8.