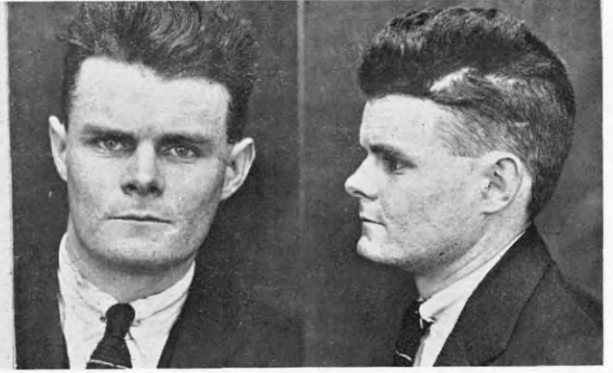




DALE, CHARLES, alias GOLDSMITH, FRANK, alias GOLDSMITH, CHARLES FREDERICK.

P.G. 23/379.

F.P. Class $\frac{9}{27}$ $\frac{R}{I}$ $\frac{0}{11}$.



DAVERN, WILLIAM FREDERICK.

P.G. 23/630.

F.P. Class $\frac{1}{17}$ $\frac{Ra}{U}$ $\left(\frac{0}{11}\right)$ 22.



DENHAM, GEORGE, alias DERHAM, alias DAVIS.

P.G. 23/375.

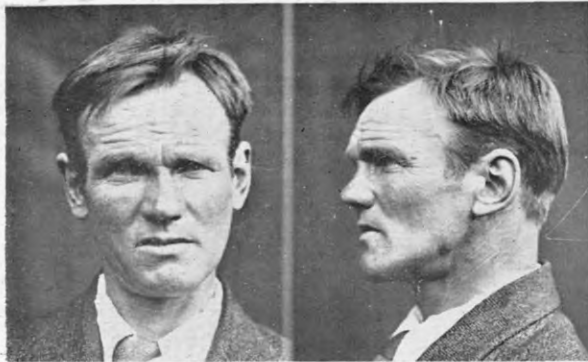
F.P. Class $\frac{25}{3}$ or $\frac{29}{3}$ $\frac{I}{O}$ 15?



DOWELL, BARTHOLOMEW JAMES.

P.G. 23/682.

F.P. Class $\frac{1}{1}$ $\frac{R}{R}$ $\frac{00}{10}$ 12.

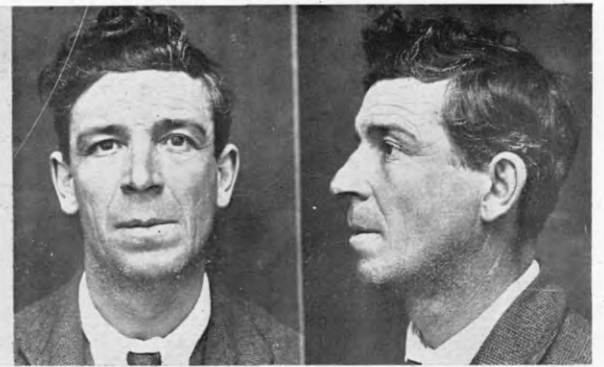


Dead, 23/5/45.

FYFE, CHARLES MARSHALL.

P.G. 21/303.

F.P. Class $\frac{9}{19}$ $\frac{00}{M}$ 6.



GARDENER, FREDERICK WILLIAM, alias HILL.

P.G. 23/640.

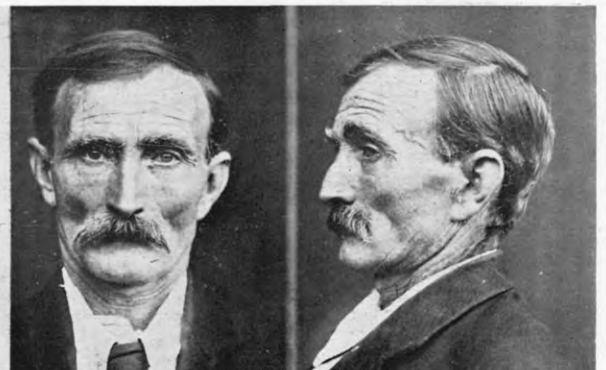
F.P. Class $\frac{3}{1}$ $\frac{R}{R}$ $\frac{10}{1}$ 8.



GARDINER, WILLIAM ROBERT, alias GARNER.

P.G. 23/657.

F.P. Class $\frac{1}{1}$ $\frac{U}{aUa}$ $\left(\frac{11}{11}\right)$ 2.



GROGAN, THOMAS, alias O'BRIEN, alias MELVILLE.

P.G. ~~23/222~~ 1922/223

F.P. Class $\frac{10}{22}$ $\frac{U}{U}$ $\frac{10}{10}$