

WATSON, LESLIE CYRIL.

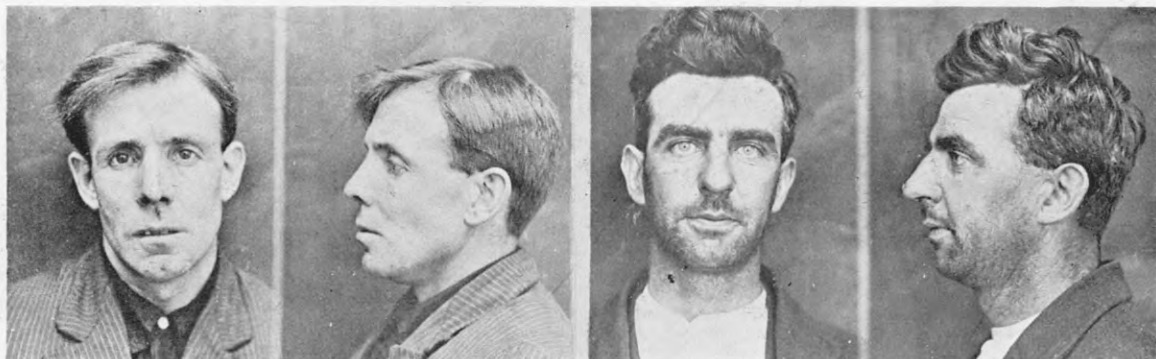
P.G. 23/353.

F.P. Class  $\frac{31}{10} \cdot \frac{IO}{R \ O} 13.$

WHITE, GEORGE, alias WHITE, GEORGE TREMAIN, alias WILLIAMS.

P.G. 23/11.

F.P. Class  $\frac{13}{24} \cdot \frac{R \ OO}{O} \text{ or } \frac{13}{20} \cdot \frac{R \ OO}{O} 24.$



WHITING, WILLIAM FRANK.

P.G. 23/328.

F.P. Class  $\frac{1}{17} \frac{A_{2a}}{A_a} \left( \frac{\cdot \cdot}{\cdot \cdot} \right) 11.$

WILLSTEED, FREDERICK.

P.G. 23/355.

F.P. Class  $\frac{25}{21} \frac{I_r}{U} \left( \frac{I_r}{OI} \right)$



WILSON, JERVAS ARMOR KIMBERLY.

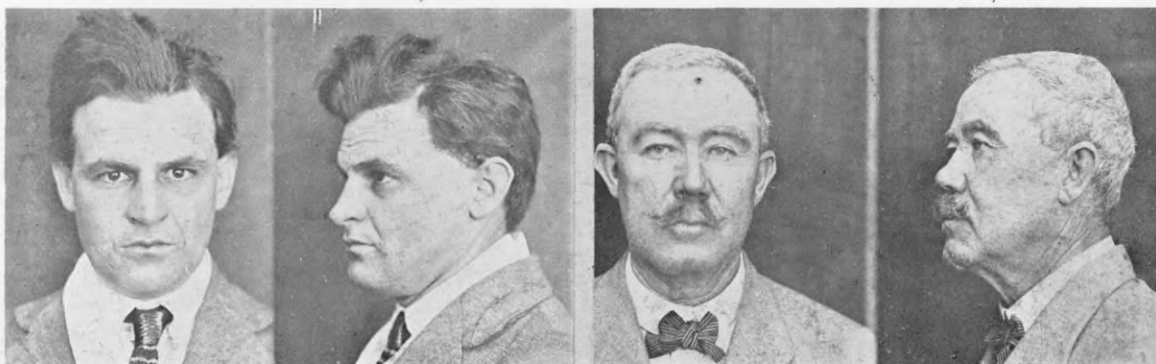
P.G. 22/702.

F.P. Class  $\frac{9}{2} \frac{U}{R} \frac{OO}{II} 6.$

WOODS, GEORGE.

P.G. 23/227.

F.P. Class  $\frac{1}{I} \frac{U}{R} \frac{OI}{II} 12.$



YEOMAN, WILLIAM THOMAS.

P.G. 23/315.

F.P. Class  $\frac{29}{20} \frac{O}{O} 13.$

YOUNG, JAMES BURNS.

P.G. 23/193.

F.P. Class  $\frac{25}{2-} \frac{M}{OO} 20.$