

PETERSEN, MARTIN.

P.G. 23/320.

F.P. Class  $\frac{13}{22}$   $\frac{R}{U}$   $\frac{II}{II}$

PRYSE, JOHN, alias OWEN, JOHN G., alias DAVIS, THOMAS, ETC.

P.G. 23/280.

F.P. Class  $\frac{1}{17}$   $\frac{A_{3a}}{A_{2a}}$



PUKU WI.

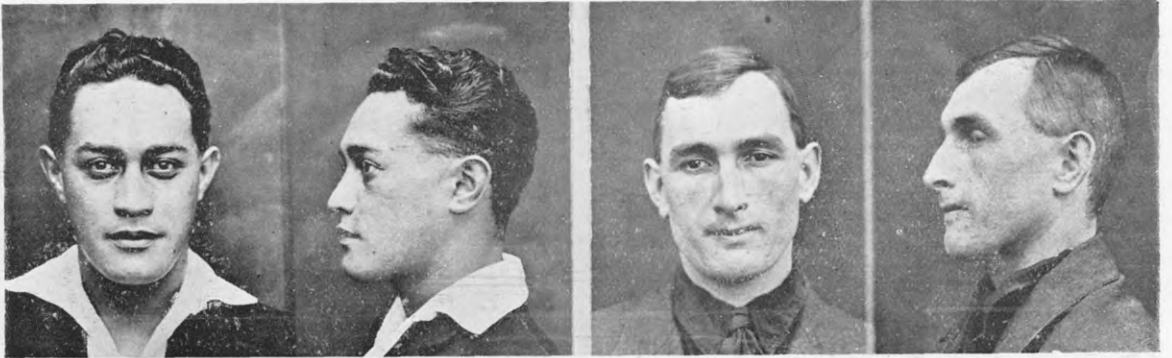
P.G. 23/208.

F.P. Class  $\frac{31}{16}$   $\frac{OI}{OO}$

RICHARDS, WILLIAM WALTER.

P.G. 23/328.

F.P. Class  $\frac{1}{1}$   $\frac{U}{U}$   $\frac{OO}{OO}$  12.



ROYAL, WILLIAM, alias ROYAL, HUKIKI, alias GOOG, ROYAL.

P.G. 23/353.

F.P. Class  $\frac{31}{28}$   $\frac{II}{II}$  17.

SAUNDERS, WILLIAM ALBERT.

P.G. 23/352.

F.P. Class  $\frac{1}{1}$   $\frac{A_{a1}}{R_a}$   $\left(\frac{\dots}{I}\right)$  11.



SIMMIS, FREDERICK EMANUEL, alias REID, JACK.

P.G. 20/224.

F.P. Class  $\frac{29}{28}$   $\frac{IO}{O}$  19.

SIMMONDS, JOHN REGINALD.

P.G. 23/315.

F.P. Class  $\frac{32}{16}$   $\frac{MO}{II}$