



EDWARDS, ERNEST CHARLES.

P.G. 22/411.

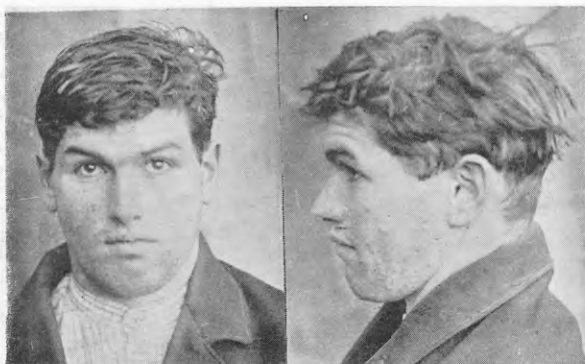
F.P. Class $\frac{11}{1} \frac{R}{R} \frac{OO}{O}$ 16.



ESDALE, HENRY ARTHUR.

P.G. 22/395.

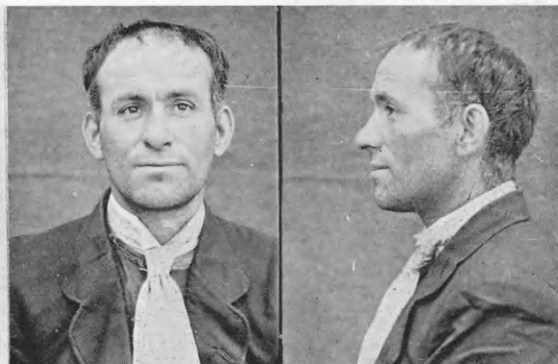
F.P. Class $\frac{27}{20} \frac{I}{MI}$ 17.



FAIRWEATHER, RANSOME CHARLES.

P.G. 22/335.

F.P. Class $\frac{13}{17} \frac{R}{U} \frac{OO}{II}$ 21.



FARROW, WILLIAM.

P.G. 22/401.

F.P. Class $\frac{9}{4} \frac{OO}{O}$ 15.



FRASER, JAMES ROSS.

P.G. 22/390.

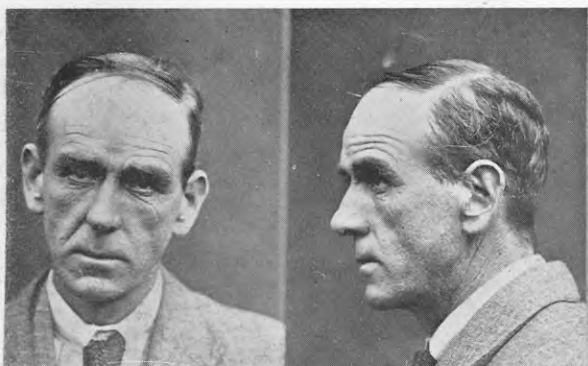
F.P. Class $\frac{1}{1} \frac{Rr}{Rr} \left(\frac{II}{II}\right)$ 5.



FULLER, MONCEY THOMAS.

P.G. 22/390.

F.P. Class $\frac{9}{1} \frac{R}{aR} \left(\frac{IO}{IO}\right)$ 19.



GARNER, GEORGE, alias BARNES, ARTHUR, alias THOMPSON, &c.

P.G. 22/380.

F.P. Class $\frac{9}{21} \frac{Rr}{U} \left(\frac{OO}{OO}\right)$



GEARY, NORMAN LINDSAY.

P.G. 22/166.

F.P. Class $\frac{1}{1} \frac{A}{aA} \left(\frac{II}{II}\right)$ 5 or $\frac{1}{1} \frac{U}{aA} \left(\frac{II}{I}\right)$ 5.