



RUSSELL, WILLIAM THOMAS.

P.G. 19/21.

F.P. Class  $\frac{1}{1} \frac{R}{R} \frac{II}{II}$  8.



SULLIVAN, MATTHEW, *alias* HA TANA, *alias* IHAKA TE WHAREUMU.

P.G. 08/167.

F.P. Class  $\frac{9}{17} \frac{U}{U} \frac{OO}{OO}$  17.



WALKER, CHARLES EDWARD, *alias* DURRANT, ROWLAND.

P.G. 19/36.

F.P. Class  $\frac{9}{1} \frac{R}{U} \frac{OO}{IO}$  10.



WALSH, THOMAS.

P.G. 19/33.

F.P. Class  $\frac{27}{12} \frac{IO}{OI}$  17.



WEAVER, HENRY ALBERT OR HENRY.

P.G. 17/674.

F.P. Class,  $\frac{13}{1} \frac{U}{A} \left( \frac{II}{O} \right)$  8.



WEAVERS, JOHN EDWARD.

P.G. 18/352.

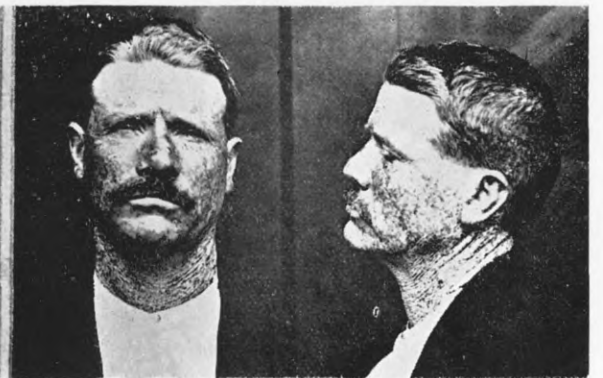
F.P. Class  $\frac{1}{1} \frac{U}{U} \frac{IO}{IO}$  12.



WELCH, GEORGE HENRY.

P.G. 18/276.

F.P. Class  $\frac{11}{5} \frac{Rr}{U} \left( \frac{10}{O} \right)$  or  $\frac{11}{13} \frac{R}{U} \frac{I}{O}$



WILLIAMS, DANIEL ANDREW.

P.G. 18/700.

F.P. Class  $\frac{1}{1} \frac{aA_{2a}}{aAa} \left( \frac{I}{I} \right)$  5.