



NICHOLAS, LOUIS.

P.G. 19/55.

F.P. Class  $\frac{14}{22}$   $\frac{U}{U}$   $\frac{OO}{OO}$



OZICH, NICHOLAS.

P.G. 18/711.

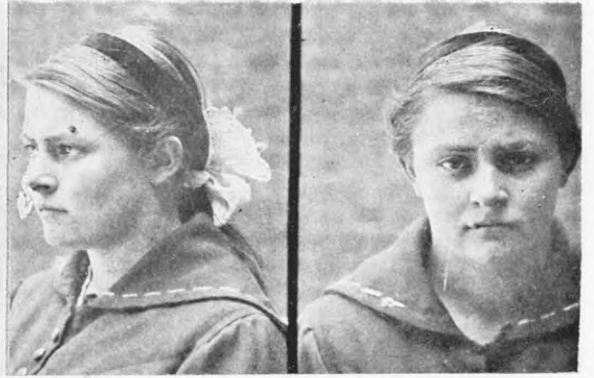
F.P. Class  $\frac{17}{17}$   $\frac{M}{10}$  14.



PHILP, LEONARD JOHN.

P.G. 18/699.

F.P. Class  $\frac{20}{20}$   $\frac{O}{OM}$  16.



PREEN, JANE ELIZABETH OR JEAN.

P.G. 18/689.

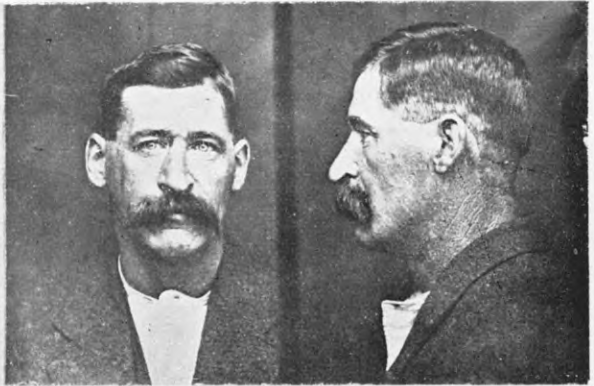
F.P. Class  $\frac{1}{1}$   $\frac{A}{aAa}$   $\left(\frac{11}{1}\right)$  4.



REIDY, JOHN JOSEPH.

P.G. 18/56.

F.P. Class  $\frac{1}{1}$   $\frac{A_{2a}}{A_{2a}}$   $\left(\frac{\cdot}{\cdot}\right)$  1 or  $\frac{1}{1}$   $\frac{A_{2a}}{A_{2a}}$   $\left(\frac{\cdot}{\cdot}\right)$



RHODES, WILLIAM CECIL, OR WILLIAM WILFRED, OR WILLIAM.

P.G. 18/701.

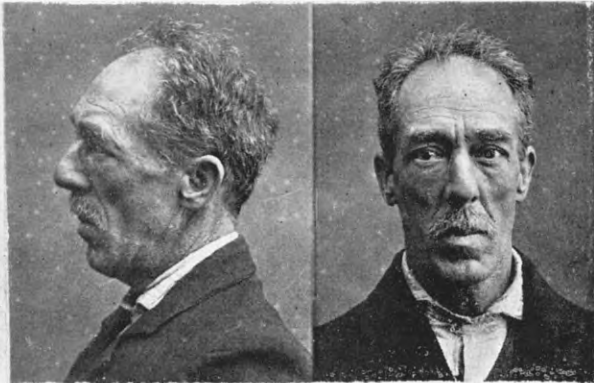
F.P. Class  $\frac{25}{19}$   $\frac{I}{M}$  20.



ROBERTSON, JOHN ALEXANDER.

P.G. 18/378.

F.P. Class  $\frac{9}{2}$   $\frac{U}{U}$   $\frac{OO}{OO}$  12.



ROBINSON, CHARLES WILLIAM.

P.G. 19/52.

F.P. Class  $\frac{23}{17}$   $\frac{M}{OO}$  20.