



DREW, JAMES.

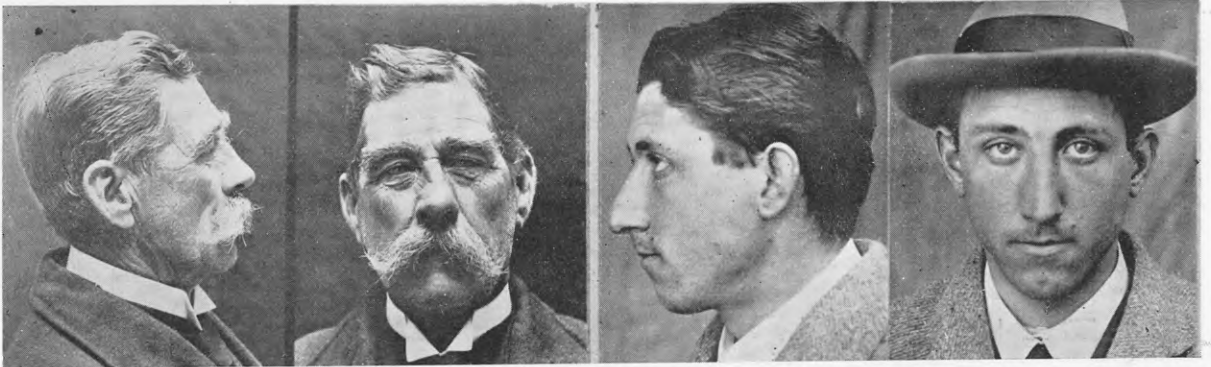
P.G. 17/650.

F.P. Class  $\frac{1}{1} \frac{A}{A} \left( \frac{II}{II} \right) 3$  or  $\frac{1}{1} \frac{R}{A} \left( \frac{II}{I} \right) 3$ .

FALLOWS, GEORGE.

P.G. 17/650.

F.P. Class  $\frac{9}{2} \frac{U}{U} \frac{OI}{OO} 14$ .



FIELD, FREDERICK, *alias* GREY, *alias* PARSLOE, ETC.

P.G. 17/619.

F.P. Class  $\frac{9}{5} \frac{U}{U} \frac{OI}{OI}$

GODHARD, CHARLES BONFIELD.

P.G. 17/617.

F.P. Class  $\frac{5}{2} \frac{U}{U} \frac{OO}{II} 10$ .



GRANT, IDA ELLEN, *alias* ROBSON, IDO ELLEN.

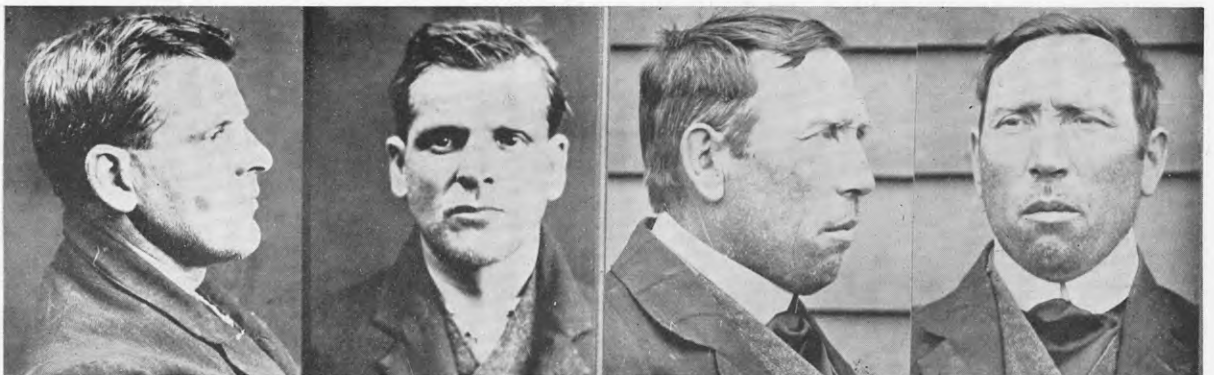
P.G. 17/548.

F.P. Class  $\frac{31}{32} \frac{II}{OM}$

HALL, JOHN HUGH, *alias* SMITH, JOHN ROBERT, *alias* HALL, JOHN.

P.G. 17/637.

F.P. Class  $\frac{9}{2} \frac{A}{Aa} \left( \frac{I}{\cdot} \right) 14$ .



HEDLEY, MARK.

P.G. 17/637.

F.P. Class  $\frac{1}{1} \frac{A}{U} \left( \frac{O?}{II} \right) 13$ .

HOLLAMBY, WILLIAM.

P.G. 17/667.

F.P. Class  $\frac{1}{17} \frac{U}{Ua} \left( \frac{IO}{O} \right) 6$ .