



DALL, JOHN SOMMERVILLE.

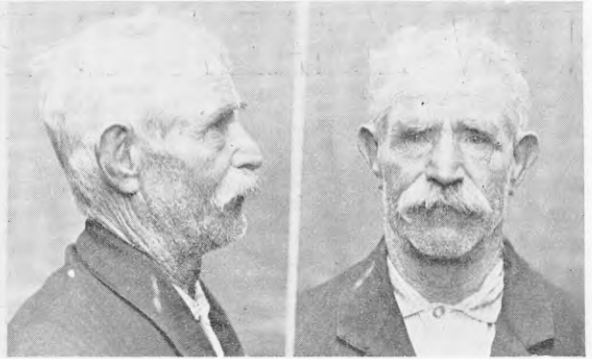
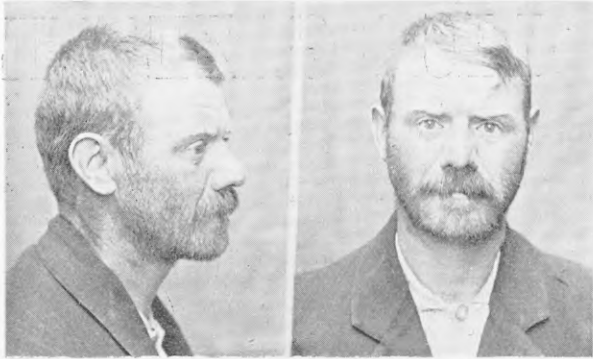
FINNERTY, JOHN JOSEPH.

P.G. 14/669.

F.P. Class  $\frac{1}{1} \frac{U}{U} \frac{OO}{OO}$  6.

P.G. 14/654.

F.P. Class  $\frac{1}{1} \frac{Aa}{Aa}$  6.



GEORGE, PETER, *alias* ROBINSON, GEORGE.

GODWIN, ALFRED.

P.G. 14/702.

F.P. Class  $\frac{5}{17} \frac{U}{U} \frac{II}{10}$  10.

P.G. 14/638.

F.P. Class  $\frac{9}{18}$  or  $\frac{13}{18} \frac{U}{U} \frac{OO}{OO}$  8.



JENNINGS, JAMES.

JONES, JOHN LEONARD, *alias* MORELAND.

P.G. 14/638.

F.P. Class  $\frac{1}{3} \frac{OO}{O}$  14.

P.G. 14/317.

F.P. Class  $\frac{31}{24} \frac{O}{II}$



LINEHAM, WILLIAM JOSEPH.

NICHOLS, EDWARD, *alias* NICHOLLS, EDWARD FRANCIS.

P.G. 14/702.

F.P. Class  $\frac{1}{1} \frac{A}{U} \left( \frac{I}{II} \right)$  13.

P.G. 14/706.

F.P. Class  $\frac{1}{1} \frac{U}{R} \frac{OI}{IO}$  9.