



BURROWS, SYDNEY, *alias* BURROWES, SIDNEY
 P.G. 44/678. F.P. Class $\frac{5}{17} \frac{A^t}{A^t} \left(\frac{01}{00} \right) \frac{M}{10}$



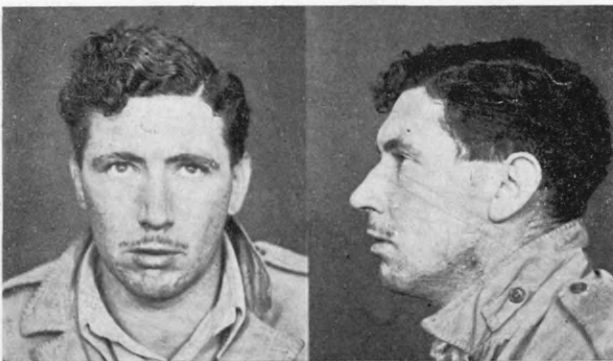
CARSON, MONICA ELVIRA
 P.G. 44/696. F.P. Class $\frac{1}{1} \frac{A}{R} \left(\frac{1}{II} \right) \frac{9}{13}$



CHARLESON, WINIFRED DELCIE, *alias* McEACHERN
 P.G. 44/691. F.P. Class $\frac{1}{1} \frac{U}{R_a} \left(\frac{01}{I \cdot} \right) \frac{16}{13}$



CUDBY, KENNETH RAYMOND
 P.G. 44/632. F.P. Class $\frac{9}{1} \frac{R}{A^t} \left(\frac{00}{\cdot 0} \right) \frac{21?}{18}$



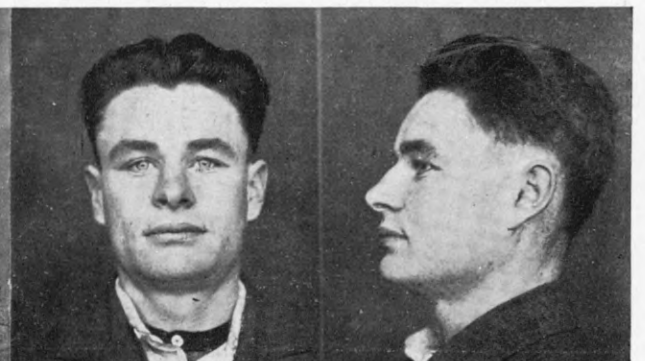
DAVIS, RAYMOND FRANK, *alias* DAVIS, RAYMOND FRANCIS CLARK
 P.G. 44/762. F.P. Class $\frac{1}{1} \frac{U}{U} \frac{II}{II} \frac{13}{10}$



DONALDSON, THOMAS EDWARD
 P.G. 44/689. F.P. Class $\frac{17}{1} \frac{I}{a U_a} \left(\frac{I}{I \cdot} \right) \frac{8}{8}$



DUNKLEY, TERENCE
 P.G. 44/765. F.P. Class $\frac{9}{1} \frac{a A_a}{a A_{2a}} \left(\frac{M}{\cdot} \right) \frac{a}{3}$



FITZGERALD, JACK
 P.G. 44/690. F.P. Class $\frac{25}{1} \frac{0}{00} \frac{24}{11}$