

MARINO, JOHN.

P.G. 42/396.

F.P. Class $\frac{27}{32}$ $\frac{11}{M}$ $\frac{0}{0}$



MARSHALI, REECE WILSON STEWART.

P.G. 42/708.

F.P. Class $\frac{9}{24}$ $\frac{R}{I}$ $\frac{00}{0}$ $\frac{M}{0}$



MARTIN, DICK, *alias* JANUARY, FRANK.

P.G. 42/399.

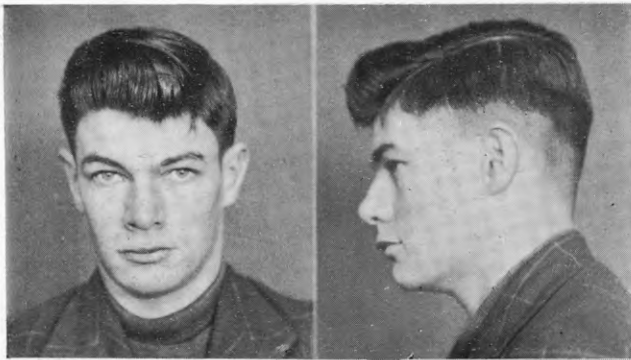
F.P. Class $\frac{16}{32}$ $\frac{0}{01}$ $\frac{0}{0}$



MERCER, WALTER WILLIAM SYDNEY.

P.G. 42/238.

F.P. Class $\frac{27}{12}$ $\frac{MM}{IO}$ $\frac{22}{10}$



MURRELL, HARRY ROY.

P.G. 42/705.

F.P. Class $\frac{1}{17}$ $\frac{R}{R}$ $\frac{00}{00}$ $\frac{0}{18}$



McCORMACK, COLIN EDWARD.

P.G. 42/564.

F.P. Class $\frac{1}{1}$ $\frac{U}{R}$ $\frac{10}{00}$ $\frac{15}{10}$



NATHAN, JOE.

P.G. 42/704.

F.P. Class $\frac{25}{17}$ $\frac{I}{00}$ $\frac{0}{19}$



OKETOPA TUIRIRANGI, *alias* OCTOBER, TEDDY.

P.G. 42/399.

F.P. Class $\frac{30}{32}$ $\frac{1M}{I}$ $\frac{0}{0}$