



McCONNELL, RUTH LILIAN.

P.G. 42/260.

F.P. Class $\frac{13}{20}$ $\frac{R}{\cdot}$ $\frac{00}{I}$ $\frac{M}{15}$



McKAY, RONALD HUGH.

P.G. 42/241.

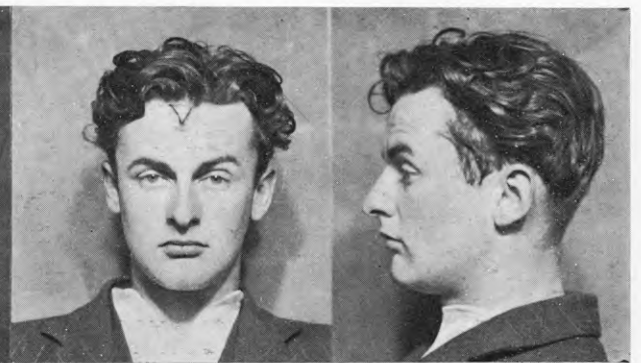
F.P. Class $\frac{9}{1}$ $\frac{A^t}{R}$ $\left(\frac{0}{10}\right)$ $\frac{7}{6}$



McSWIGGAN, JAMES, *alias* McSWIGAN.

P.G. 42/205.

F.P. Class $\frac{9}{1}$ $\frac{R}{A^t}$ $\left(\frac{II}{\cdot}\right)$ $\frac{22}{10}$



O'NEILL, KENNETH KING.

P.G. 42/58.

F.P. Class $\frac{1}{1}$ $\frac{A}{R}$ $\left(\frac{0}{OI}\right)$ $\frac{16}{16}$ or $\frac{5}{1}$ $\frac{A}{R}$ $\left(\frac{0}{OI}\right)$ $\frac{16}{16}$



PATON, RAYMOND DAVID.

P.G. 42/234.

F.P. Class $\frac{9}{17}$ $\frac{U_r}{U}$ $\left(\frac{II}{II}\right)$ $\frac{0}{12}$



PAYNE, NANCY ELIZA MAY.

P.G. 42/261.

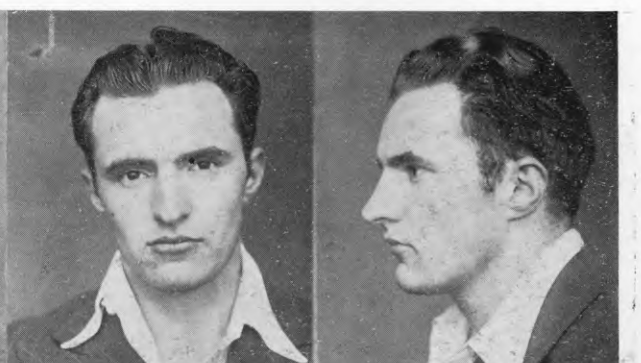
F.P. Class $\frac{1}{1}$ $\frac{U}{U}$ $\frac{II}{II}$ $\frac{7}{3}$



POINTON, PATRICK GERALD.

P.G. 42/145.

F.P. Class $\frac{5}{17}$ $\frac{U}{U}$ $\frac{00}{00}$ $\frac{0}{17}$



PORT, STANLEY THOMAS.

P.G. 42/32.

F.P. Class $\frac{27}{12}$ $\frac{IM}{MI}$ $\frac{16}{18}$