

Plowman, Pamela Joyce.

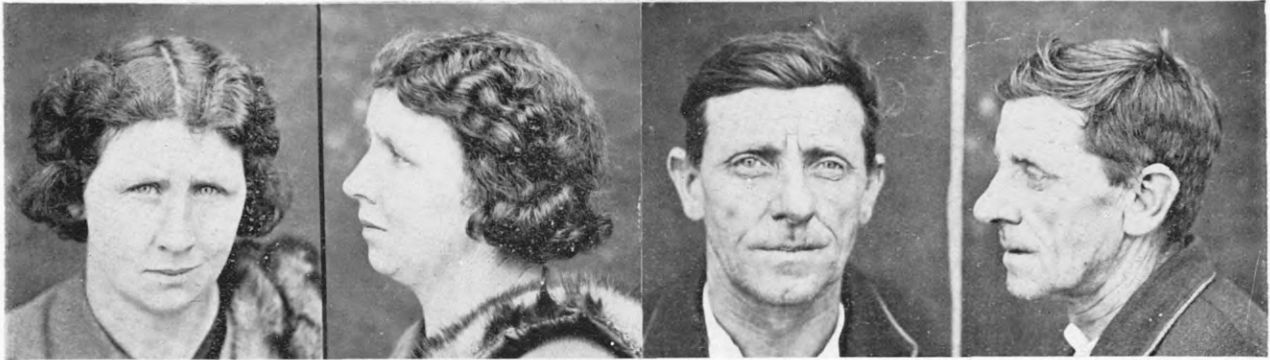
P.G. 40/303.

F.P. Class $\frac{3}{20}$ $\frac{A^O}{O}$ $\frac{O}{M}$ $\frac{O}{18}$

Popham, Francis Noel.

P.G. 40/248.

F.P. Class $\frac{9}{1}$ $\frac{A^r}{U}$ $\left(\frac{I}{IO}\right)$ $\frac{17}{15}$



Quinn, Santella Claudia.

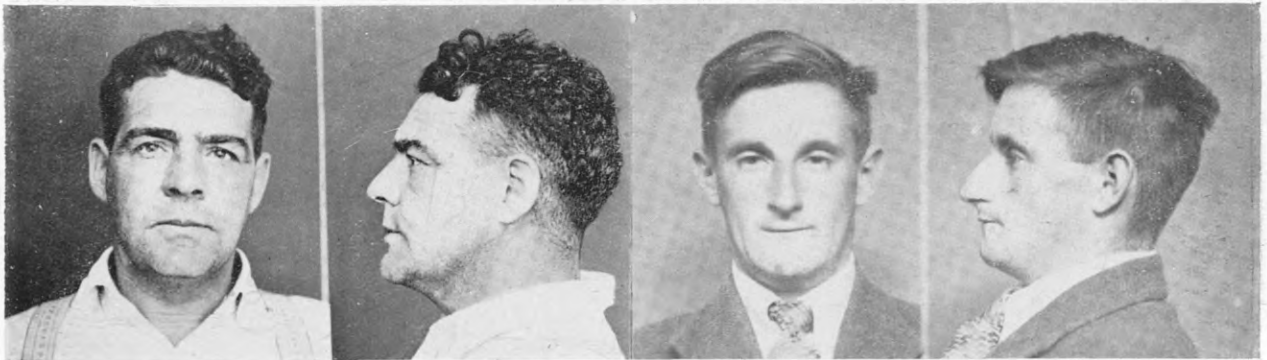
P.G. 40/282.

F.P. Class $\frac{25}{2}$ $\frac{I}{O}$ $\frac{17}{O}$ $\frac{17}{18}$

Reece, Albert William.

P.G. 40/238.

F.P. Class $\frac{1}{17}$ $\frac{A}{a^A}$ $\left(\frac{IO}{I}\right)$ $\frac{1}{5}$



Reilly, John Joseph.

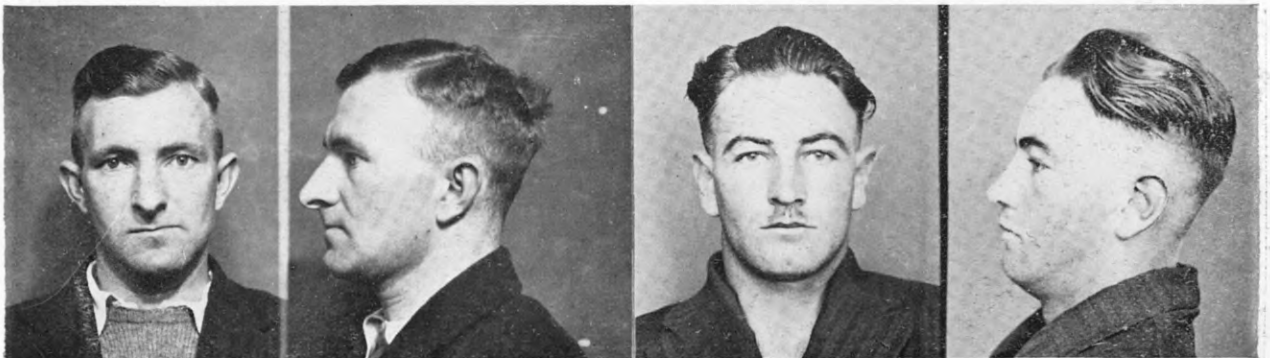
P.G. 40/248.

F.P. Class $\frac{1}{1}$ $\frac{U}{R}$ $\frac{II}{II}$ $\frac{10}{14}$

Roberts, Ernest Alfred.

P.G. 40/229.

F.P. Class $\frac{9}{5}$ $\frac{U}{U}$ $\frac{OO}{OO}$ $\frac{20}{1}$



Roche, Harold William.

P.G. 40/228.

F.P. Class $\frac{28}{6}$ $\frac{I}{O}$ $\frac{28}{M}$

Roe, Mervyn Mathew.

P.G. 40/232.

F.P. Class $\frac{27}{32}$ $\frac{MO}{II}$ $\frac{O}{O}$