



QUELCH, WILLIAM JAMES EDWIN.

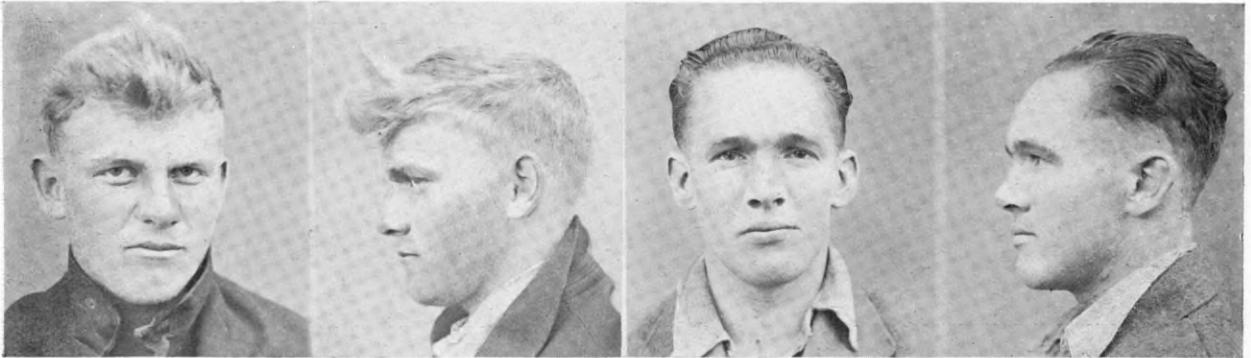
P.G. 40/102.

F.P. Class  $\frac{21}{27}$   $\frac{10}{0}$   $\frac{0}{19}$

RISELEY, CHARLES ARCHIBALD.

P.G. 39/720.

F.P. Class  $\frac{7}{1}$   $\frac{U}{R}$   $\frac{00}{I}$   $\frac{25}{13}$



RODGERS, WINSTONE DOUGLAS, *alias* ROGERS.

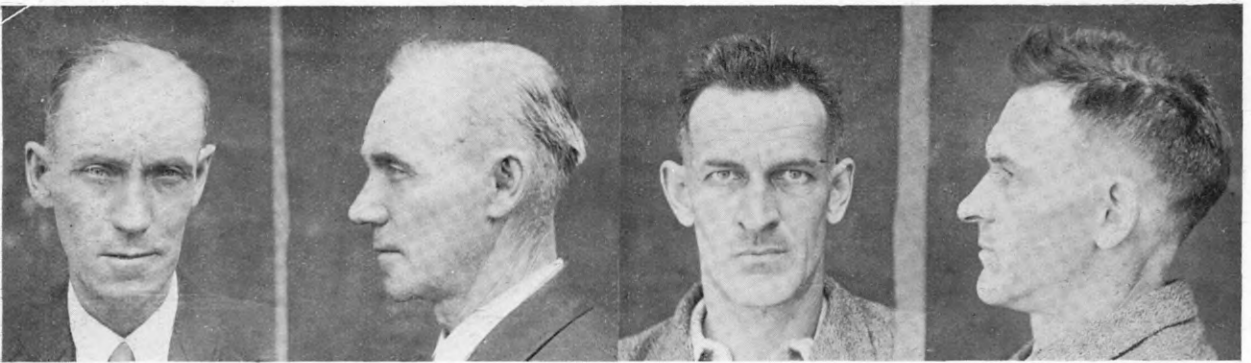
P.G. 39/744.

F.P. Class  $\frac{5}{17}$   $\frac{R}{Ra^t}$   $\left(\frac{10}{I}\right)$   $\frac{M}{14}$

RUSTON, JOHN WILLIAM.

P.G. 39/681.

F.P. Class  $\frac{31}{12}$   $\frac{1M}{11}$   $\frac{21}{17}$



SCOTT, LEONARD.

P.G. 40/75.

F.P. Class  $\frac{27}{16}$   $\frac{MI}{01}$   $\frac{20}{0}$

SERIN, LEO.

P.G. 40/74.

F.P. Class  $\frac{17}{3}$   $\frac{I}{M}$   $\frac{12}{11}$



SHEARER, EDWARD DEAKIN.

P.G. 40/98.

F.P. Class  $\frac{13}{28}$   $\frac{R}{Ir}$   $\left(\frac{I}{i}\right)$   $\frac{0}{19}$

SMITH, CHARLES HENRY.

P.G. 39/911.

F.P. Class  $\frac{15}{18}$   $\frac{U}{U}$   $\frac{00}{0}$   $\frac{0}{13}$