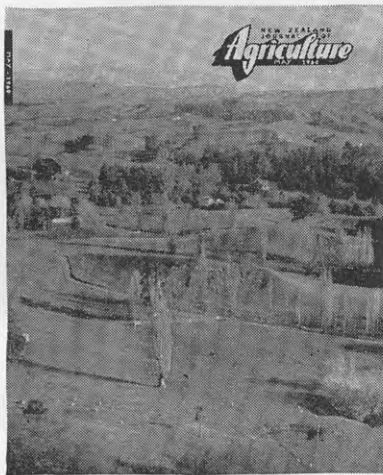


CONTENTS



[N.Z. Forest Service photo by J. H. Johns

Rolling pasture land between Matapiro and Crownthorpe, Hawke's Bay, is shown on our cover this month. This extensive view emphasises most strikingly how grasslands dominate the New Zealand landscape. The tree-studded paddocks in the foreground and buildings ringed by plantations further back are on Tunanui Station, the property of Sir Andrew Russell, who commanded the New Zealand Division in the First World War.

FAO's Director-General Studies N.Z. Farming	414
World Seed Campaign	418
Molybdate Topdressing and Animal Health	I. J. Cunningham 419
Paradontal Disease of Sheep in South Canterbury	M. C. Armstrong 429
Manila Animal Health Conference	S. Jamieson 433
Care of Livestock during June	440
Winter Pasture Management (Seasonal Notes)	441
Turkey Breeding in New Zealand	J. H. Jones 443
Value of Skim Milk as a Feed for Pigs	I. H. Owttram 447
The Home Garden in June	A. G. Kennelly 453
Meteorological Records for March	456
New Weather Forecast Districts	457
Hot Room for Liquefying Honey	L. H. Johnson 459
Plastics for Greenhouses and Frames	W. Brandenburg and S. Challenger 465
Radio Broadcasts	472
Flood Gates for Drainage Outlets	D. F. Scott 473
Round the Research Stations	476
Pruning Granny Smith Apple Trees	R. Viney 479
Recent Research Work	491
The Home Orchard in Winter	S. Frew 493
Pressing Woollen Fabrics	Maud B. Strain 499
Quilted Table Mats	Naomi F. Banks 504
The Flower Garden:	
Growing Waratahs	F. E. Wilkin 505
Garden Work for June	Joy Watkins 509
Twenty Ways with Mayonnaise	Naomi F. Banks 512

NEW ZEALAND DEPARTMENT
 OF AGRICULTURE

HEAD OFFICE:

Dominion Farmers' Institute Building,
 Featherston Street, Wellington

DIRECTOR-GENERAL:

P. W. Smallfield

ASSISTANT DIRECTOR-GENERAL:

I. J. Cunningham

Director (Administration): G. J. Anderson

DIVISIONAL DIRECTORS:

Animal Industry .. J. E. Mellwaine
 Animal Research .. J. F. Filmer
 Dairy .. H. A. Foy
 Farm Advisory .. J. W. Woodcock
 Horticulture .. A. M. W. Greig

Editor: G. J. Neale

SUBSCRIPTION RATES

The "Journal" is issued monthly. The subscription within New Zealand is 10s. a year; the overseas subscription is 13s. (sterling). Subscriptions can be paid directly to any office of the Department of Agriculture, or the "Journal" may be ordered from any bookseller or newsagent. Individual copies are available from Publications Section, Department of Agriculture, P.O. Box 2298, Wellington, at 1s. a copy, post free.

Subscribers' inquiries (preferably accompanied by the address cut from a recent "Journal" wrapper) should be sent to the nearest office of the Department of Agriculture.

COPYRIGHT PROVISIONS

Articles in "The Journal of Agriculture" are copyright, but may be reprinted provided both the "Journal" and author are acknowledged and the articles are not associated with advertising material.

The Minister of Agriculture does not accept responsibility for any of the private and trade advertisements included in this publication.

All correspondence relating to the "Journal" should be addressed to the Editor, "The New Zealand Journal of Agriculture", P.O. Box 2298, Wellington.

REGISTERED AT THE G.P.O., WELLINGTON, AS A MAGAZINE.