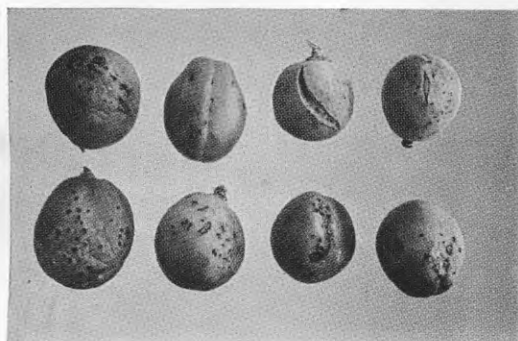


Fruit symptoms . . .



. . . of
yellow
leaf
spotting

Leaf symptoms . . .



Yellow Leaf Spot and Fruit Pimpling and Cracking of Nectarine and Peach

SOME varieties and blocks of nectarine trees in the Alexandra district have for many years produced malformed, spotty, and cracked fruit. Though damage is not of the same intensity every year, incidence appears to be increasing. Attempts at eliminating the damage, mainly along the lines of a possible trace element deficiency, have been unsuccessful. Recent trial work has shown promising results on both Hunt's Tawny and Goldmine nectarine and seems to point to the fruit injury being caused by eriophyid mite or capsid bug damage in the early stages of fruit development.

By W. S. KEMP,
Horticultural Instructor,
Department of Agriculture,
Alexandra

THOUGH the trials are not yet conclusive, publication of results to date may enable growers with similar fruit conditions to undertake their own trials and thus give a wider field from which information could be obtained.

Though the preliminary work has been confined to Hunt's Tawny and Goldmine, most other nectarine varieties are known to show similar symptoms in some orchards. Cardinal and John Rivers are two varieties sometimes showing severe symptoms.

Fruit symptoms vary from a reddish spotting or scabbiness to severe cracking and distortion, often with gum exudation (Fig. 1). There are also usually leaf symptoms, though these are more apparent in some varieties than others. They comprise a yellow

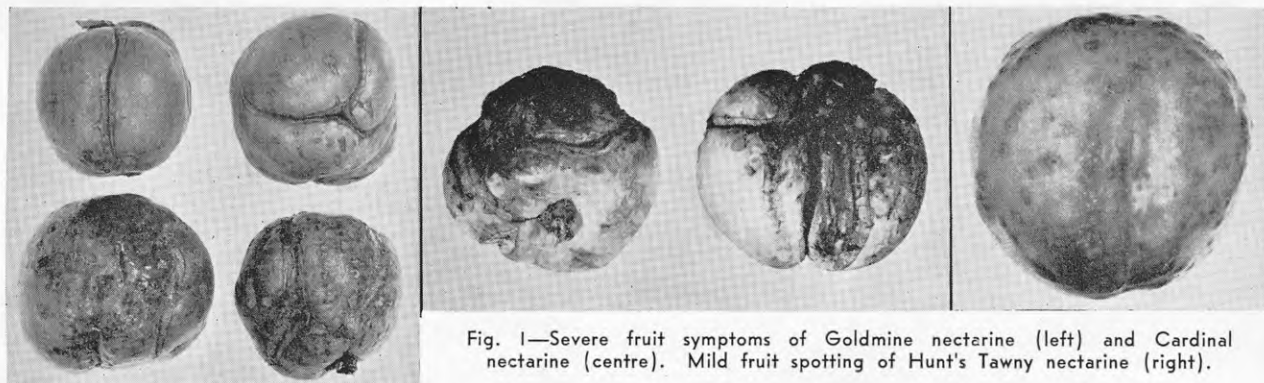


Fig. 1—Severe fruit symptoms of Goldmine nectarine (left) and Cardinal nectarine (centre). Mild fruit spotting of Hunt's Tawny nectarine (right).