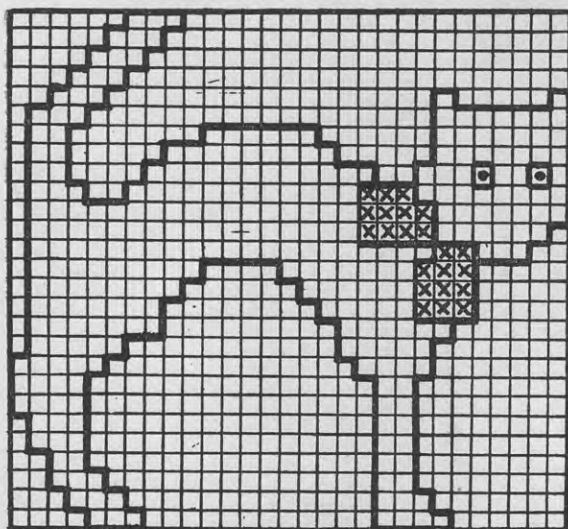


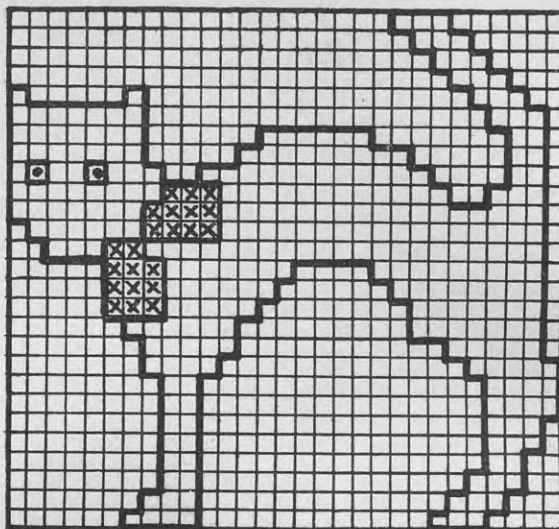
SMALL BOY'S CARDIGAN

Right Pocket



X = Red □ = Yellow

Left Pocket



To Shape Armhole

Still dec. as before at front edge, cast off 4 st. at beg. of next row, then dec. 1 st. at this same edge on next 7 rows. Cont. with armhole edge straight, dec. as before at front edge until 32 st. rem., then cont. without shaping until work measures 15 in., ending at armhole edge.

To Shape Shoulder

Next row: Cast off 7 st., work to end.
Next row: Work to end.
Rep. last 2 rows once.
Next row: Cast off 8 st., rib to end.
Work $1\frac{3}{4}$ in. in rib on these 10 st.
Cast off in rib.

Left Front

Work 1 in. of rib as for right front, omitting buttonhole and ending with row on wrong side at side edge.

Cont. in st.st. with reversed front border on No. 12 needles thus:

Next row: With No. 10 needle k. to last 10 st., with a short No. 12 needle rib to end.

Next row: With a short No. 12 needle rib 10, with No. 10 needle p. to end.

Cont. in this way until work measures 7 in., ending side edge.

To Shape Front

Next row: K. to last 12 st., k. 2 tog., rib 10.

Work 5 rows without shaping.

Cont. in this way until work measures $9\frac{1}{2}$ in., ending side edge. Shape armhole and shoulder and complete front border as for Right Front.

Back

With Yw. wool and No. 12 needles cast on 92 st. and work 1 row in k. 1, p. 1 rib. Change to Bl. and p. 1 row.

Cont. in rib until work measures 1 in., ending row on wrong side.

Change to No. 10 needles and work in st.st. until back measures $9\frac{1}{2}$ in., ending p. row.

To Shape Armholes

Cast off 4 st. at beg. of next 2 rows, then dec. 1 st. both ends of next 7 rows.

Cont. on 70 st. until work measures 15 in., ending p. row.

To Shape Shoulders

Cast off 7 st. beg. of next 4 rows, 8 st. beg. of next 2 rows.

Cast off remaining st.

Sleeves

With Yw. wool and No. 12 needles cast on 48 st. and work 1 row in k. 1, p. 1 rib. Change to Bl. wool and p. 1 row, then work 2 in. in rib.

Change to No. 10 needles and cont. in st.st. inc. 1 st. both ends of every 6th row until there are 70 st. on needle, then work straight until sleeve measures 11 in. or required length.

To Shape Top

Cast off 2 st. beg. of next 2 rows, dec. 1 st. both ends of every alternate row until 50 st. rem., dec. 1 st. both ends of every row until 30 st. rem., cast off 3 st. beg. of every row until 18 st. rem.

Cast off remaining st.

Pockets

Right Front

With No. 10 needles and Bl. wool cast on 33 st. Work 2 rows st.st. Cont. in st.st. working cat motif from chart on centre 29 st. thus:

Next row: K. 2 Bl., work from chart thus: K. 6 Bl., 4 Bk., 12 Bl., 3 Bk., 4 Bl. k. 2 Bl.

Next row: P. 2 Bl., work 2nd row of chart: P. 3 Bl., 3 Bk., 13 Bl., 3 Bk., 7 Bl., p. 2 Bl.

Cont. in this way, keeping the 2 extra st. up each side until the 27 rows of chart are completed.

Now using Bl. wool work 3 rows in st.st., then work 4 rows in k. 1, p. 1 rib.

Change to Yw. wool and k. 1 row, then work 1 row in k. 1, p. 1 rib.

Cast off in rib.

Left Front

Work exactly as given for right front pocket but work from chart for left front.

To Make up

Press work lightly on wrong side with hot iron and damp cloth. Sew pockets into position on each front with lower edge of pocket about $\frac{1}{2}$ in. up from top of ribbed waist and 1 in. in from ribbed front borders. Join side, shoulder, and sleeve seams. Sew sleeves into armholes, matching the seams. Join front borders neatly and sew this strip along back of neck edge. Sew on buttons to match with buttonholes. Press seams.