

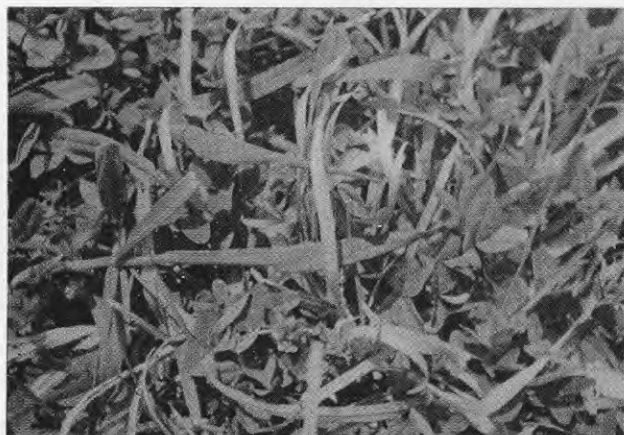
IRON DEFICIENCY IN TIMOTHY AND COCKSFOOT ON PEAT



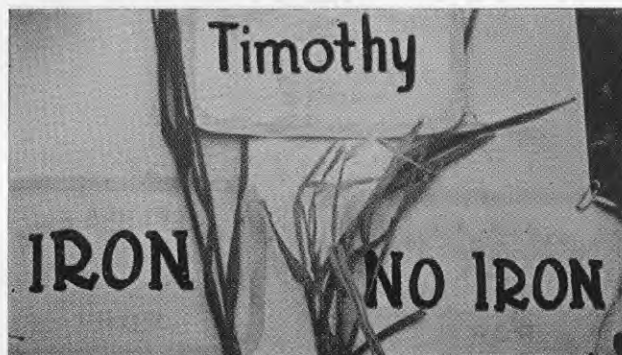
Typical yellowing of leaves in timothy which is a striking symptom of iron deficiency.



Cocksfoot and timothy showing symptoms of iron deficiency.



Badly affected timothy plant.



Treated (left) and untreated (right) timothy plants 14 days after the application of iron chelate. The stripes are typical symptoms of iron deficiency.



Treated (left) and untreated (right) cocksfoot leaves 14 days after the treatment was applied.



Half of a single cocksfoot plant was sprayed with iron chelate, the other half being left untreated. The photograph was taken 10 days later.