

"Paint it with

LUSTAR

and you'll double its life!"

That goes for gates, yards, fences, buildings, trailers, implements, silos, horse-, cow-, and stack covers, tarpaulins, etc., etc.

Since first marketed in 1944, Luster has made firm friends all over New Zealand, because of its simplicity in use, and reliable performance. Luster Improved Tar-Base Paint is equally good for metals, timbers (including pinus), or fabrics. In black only: Gallons 25/-, 4-gallons 80/-, 45-gallon drums (railage free) £30.

Order from your Stock Firm or Hardware Dealer.

N.Z. Distributors:

McGILL AGENCIES, Box 1507, Wellington.

Government Publications

GRASSLANDS OF NEW ZEALAND

By Sir E. Bruce Levy.

322 pages, illustrated. Price 26/6 Post free

PLANT PROTECTION IN NEW ZEALAND

A comprehensive guide for professional growers, students, and home gardeners. 700 pages, illustrated. Price 56/- Post free

ARABLE FARM CROPS OF NEW ZEALAND

By J. W. Hadfield.

332 pages, illustrated. Price 28/6 Post free

Obtainable from:

The Government Printer,
Lambton Quay, Wellington, and
130 Oxford Terrace (P.O. Box 1721),
Christchurch.

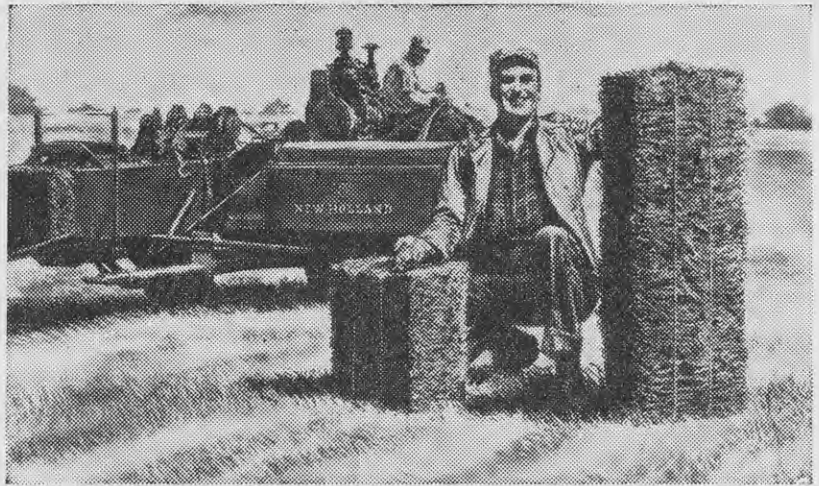


CROWN BRAND STOCK REMEDIES

MONEKIL "S"

Sheep Worm Remedy

Sole N.Z. Agents
MACDERMOTT & DUNCAN LTD.
Box 624, Wellington



The Super 66 — America's most popular baler — builds bales from 12" to 52".

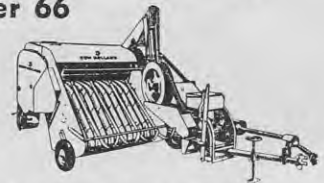
Get the bales you want every time

with a super 66

Whatever the weight you want to handle . . . whatever your crop . . . wherever you farm—the bales you build with a New Holland Super 66 are alike in density and size. This applies to bales all the way from a foot long to 52 inches.

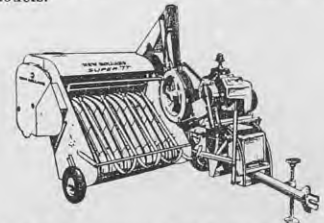
It's the new *Metermatic* bale control that makes this possible. With a quick setting of the measuring arm you build the *exact* bale you want. Every bale is firm. And because each bale is measured from "zero," you get better uniformity than ever before. Good, square bales just right for stacking.

Engine-powered or power-take-off model, the Super 66 bales up to 9 tons an hour. New Holland Machine Co., a subsidiary of Sperry Rand Corp., New Holland, Pennsylvania, U.S.A.



Super 77 World's fastest baler

Combines high capacity — up to 12 tons an hour — with unusual ability to keep working day after day all season long. You get richer harvests because the "77" bales quickly and dependably when the crop is at its prime. Available in engine-powered and power-take-off models.



Model 87 Favourite of wire-tie balers

For the farmer who wants bales tied with wire, the "87" turns out uniform bales — from 60 to 125 pounds — securely tied with New Holland's exclusive "In-Line" twist. Engine-powered or power-take-off models, capacity is up to 12 tons an hour.



NEW HOLLAND "First in Grassland Farming"

FREE CATALOGS! For free catalogs on New Holland's balers, write: Doring Implement Distributors, P.O. Box 1179, Wellington, C.1, New Zealand.

Name

Complete Address

NH-4