

Volume 95  
 Number 3  
 16 September  
 1957

(Established 1910)

# NEW ZEALAND JOURNAL OF Agriculture

Published by

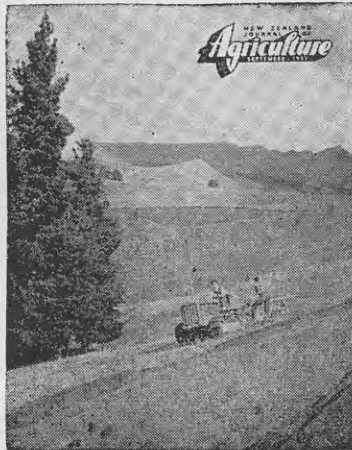
Direction

of

Rt. Hon. K. J. Holyoake.

Minister of Agriculture

## This Month's Cover



Soil erosion is not as serious in New Zealand as in other countries that have been farmed longer, but there are places and circumstances in New Zealand where erosion problems have arisen and where they could become more serious if correct land use is not adopted at once. The Soil Conservation Service, now incorporated in the Department of Agriculture, offers, through this Department and Catchment Boards, technical assistance and subsidies to aid the re-establishment of degenerated country. This month's cover shows pasture furrowing on rolling North Canterbury country to reduce wasteful run-off. Photograph by National Publicity Studios.

## New Zealand Department of Agriculture

### HEAD OFFICE:

Dominion Farmers' Institute Building,  
 Featherston Street, Wellington

### DIRECTOR-GENERAL:

E. J. Fawcett

### DEPUTY DIRECTOR-GENERAL:

R. B. Tennent

### ASSISTANT DIRECTOR-GENERAL:

P. W. Smallfield

### DIVISIONAL DIRECTORS:

Animal Industry	J. E. McIlwaine
Animal Research	J. F. Filmer
Dairy	H. A. Foy
Extension	J. W. Woodcock
Horticulture	A. M. W. Greig

Editor: G. J. Neale

## TABLE OF CONTENTS

Molybdenum Poisoning in Cattle on Pumice Land and Its Control by Injection of Copper	I. J. Cunningham	218
Water Harvesting	P. B. Lynch	223
Show Dates		224
Domestic Beekeeping	A. W. Bennett	225
Defects in Cream Flavour Caused by Addition of Water	M. J. McFetridge	226
The Dangers of Fodder Beet for Cattle and Sheep	V. J. Williams and M. R. Coup	227
Outdoor Cages for Household Laying Birds	P. Josland	231
Land Development on a Northland Problem Soil	R. G. Warren	233
Prevent Child Drownings with Covers for Sheep Dips		235
Central Otago—A Changing Grassland Scene	S. H. Saxby	238
No Benefit from Subsurface Placement of Phosphatic Fertilisers in Pasture	J. Karlovsky	245
Care of Livestock during October		246
Crop and Pasture Management (Seasonal Notes)		247
Infectious Laryngotracheitis of Poultry	R. M. Salisbury	249
Farm Building Construction	H. W. T. Eggers	251
Crops for Winter Feeding of Pigs	I. H. Owtram	259
Recent Research Work: Phosphate Trials at Invermay	R. S. Scott	263
The Home Garden	A. G. Kennelly	264
Meteorological Records for July		272
Conservation Farming in Central Otago Restores Badly Eroded Cropland	G. G. Calder	273
Probable Effects of Manuka Blight on Beekeeping in North Auckland	D. Roberts	279
Radio Broadcasts for Farmers		282
Overdrilling Pumice Pastures	G. S. Robinson and M. W. Cross	283
Dairy Produce Graded for Export		288
Convenient Type of Pot Dip	G. L. Wickenden	289
Seed Production in New Zealand: Chewings Fescue	W. Faithful	293
Renovation of Deteriorated Lawns	C. Walker	300
Rich Fruit Cakes	Maud B. Strain	301
The Flower Garden	K. H. Marcussen and Rosalie A. Campion	307
Folding Waste Basket	Eleanor S. Campbell	317
Child's Seamless Classic Cardigan		319

### SUBSCRIPTION RATES

The "Journal" is issued monthly. The subscription within New Zealand is 10s. a year; the overseas subscription is 13s. (sterling). The "Journal" may be ordered from any bookseller or newsagent or direct from any office of the Department of Agriculture. Individual copies are available from Publications Section, P.O. Box 2298, Wellington, at 1s. a copy, post free.

Subscribers' inquiries (preferably accompanied by the address cut from a recent "Journal" wrapper) should be sent to the nearest office of the Department of Agriculture.

### COPYRIGHT PROVISIONS

Articles in "The Journal of Agriculture" are copyright, but may be reprinted provided both the "Journal" and author are acknowledged and the articles are not associated with advertising material.

The Minister of Agriculture does not accept responsibility for any of the private and trade advertisements included in this publication.

All correspondence relating to the "Journal" should be addressed to the Editor, "The New Zealand Journal of Agriculture", P.O. Box 2298, Wellington

REGISTERED AT THE G.P.O., WELLINGTON, AS A MAGAZINE.