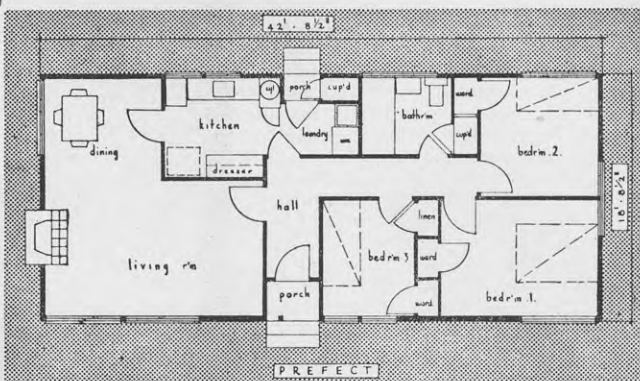


£1,979



perfect



POST THIS NOW

The Putaruru Timberyards Limited, Box 8, Putaruru.

Please post me full details of your "Perfect" house.

NAME

ADDRESS

● £1,979 complete, ex factory, Putaruru ● Area 800 sq. ft. ● Transportable complete to your site ● Approved by State Advances Corporation for loan finance.

Area Agents:—S. D. Tye, Tauranga. O. R. Morgan, Eruera St., Rotorua. Farrell & Beacham, Box 102, Hastings. Gordon Vaile Ltd., Auckland. Frank Parkes Ltd., Manly. Alders Timberyards & Joinery Ltd., Huntly. E. Pearce, Kents Land Agency, Taupo. J. D. Donnelly, Taupo. Wellington, Wairarapa, Manawatu, Taranaki enquiries to Carlyle Investments Ltd., Box 490, Rotorua.

THE PUTARURU TIMBERYARDS LIMITED
Box 8, Putaruru, Telephone 691

P.J.1

The Journal of The British Grassland Society

This Journal is a medium for the publication of the results of research and practical experience in the realm of Grassland Husbandry.

Editor: A. G. G. HILL.

CONTENTS: Volume XI. No. 3. 1956.

- | | |
|--|--|
| 1. The Yields and Composition of Lucerne, Grass and Clover under Different Systems of Management II. | W. Ellis Davies and R. O. Davies. |
| 2. A Method for Determining Developmental Stages in Grass. | R. S. L. Jeater. |
| 3. The Influence of Sward Composition and Sward Management on the following Oat Crop. | R. Hughes and D. J. Griffiths. |
| 4. The Effect of Two Rates of Stocking on Contrasting Swards for Poultry. | S. J. Cowlshaw, D. E. Eyles and J. G. Astbury. |
| 5. Some Thoughts on Grass. | W. Buchan. |
| 6. Manuring and Grazing for Seed Production in S.37 Cocksfoot and S.215 Meadow Fescue. | J. O. Green and T. A. Evans. |
| 7. Comparative Productivity of 27 Strains of Grasses in the West of Scotland. | I. V. Hunt. |
| 8. Copper Deficiency Disorders in Sheep and Cattle in Britain. | Ruth Allcroft. |
| 9. The Effect of Grasses on Aggregation in Light Soils. | Joyce Pringle and J. R. H. Coutts. |
| 10. Comparison of Two Methods for the Controlled Grazing of Dairy Cows. | Zena D. Hosking and C. Line. |
| 11. Some Diseases Associated Particularly with the Grazing Animal. | P. G. Hignett. |
| 12. 1956 Summer Meeting of the British Grassland Society. | |

This Journal is published quarterly. Subscription, Volume 1, 15/- or \$2. Annual Subscription thereafter 30/- or \$4 per volume.

Orders to: THE SECRETARY, BRITISH GRASSLAND SOCIETY, 69, MAY STREET, BELFAST, NORTHERN IRELAND.