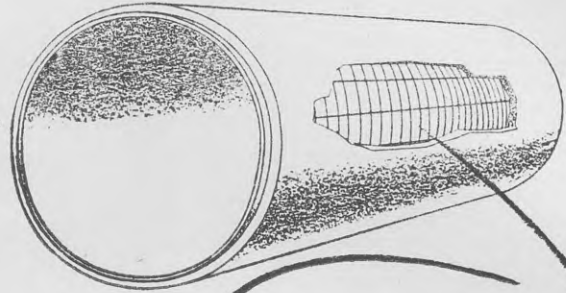


SAVE MONEY ON FARM BRIDGES

USE HUMES' REINFORCED CONCRETE CULVERT PIPES

Lay one of Humes' reinforced culvert pipes in your drain or water crossing, pack it firmly with earth, and you've got a bridge that's guaranteed to carry any weight from a cart-horse to a bull-dozer.



**Whatever Your Pipe or Concrete Problem,
Bring It To Humes. They supply . . .**

- Pipes, from 4in. to 6ft. diameter.
- Concrete water troughs.
- Dry and wet septic tanks.
- Reinforced concrete fence posts.
- Water-storage tanks.
- Concrete well-liners.

HERE'S WHY HUMES'
CULVERT PIPES ARE SAFER,
STRONGER

Every pipe is reinforced with a spiral mesh of tough, extra-strong steel, spot-welded and scientifically spun into the concrete.

HUME INDUSTRIES (N.Z.) LTD.,

Head Office, 180 Lambton Quay, Wellington, P.O. Box 2124.

Branches at Wellington, Auckland, Wanganui and Christchurch.

Factories at: Penrose, Onehunga, Tauranga, Gisborne, Taumarunui, New Plymouth, Hastings, Wanganui, Waipukurau, Palmerston North, Linden, Upper Hutt, Lower Hutt, Nelson, Timaru and Dunedin.



AN ANNOUNCEMENT OF TASMAN PULP AND PAPER COMPANY LIMITED, AUCKLAND

Now comes timber
backed by the brand . . .



When the great pines of Kaingaroa Forest have been felled, transported, barked and sorted, and have then been sawn, seasoned and perhaps pressure treated in the world's most modern sawmill, it makes sense to offer the result to you as a branded product.

WHAT IS BEHIND THE "BRAND" FOR YOU?

The Tasman brand on the end of every piece is your assurance that it is timber true to grade, sawn to close tolerances . . . the best exotic softwood timber available from any source in the grade and condition that you specify. From the huge volume of wood used in producing newsprint, wood pulp and timber in the Tasman mill the best logs are selected for sawing. The timber is graded at the point of production, and only the better grades are marketed as timber. Only the best gets through to you. The brand 'Tasman' on this timber has behind it all the

technical resources and the reputation of Tasman Pulp and Paper Company. Only kiln-dried timber and pressure-treated timber bears the brand name. Tasman pine is available in the unseasoned condition, sawn from selected logs to the same exacting standards, but it does not bear the brand name. In brief . . . the resources of our mill and our technical know-how are devoted to providing timber true to grade, true to size, as you want it and when you want it. The backing of a great national enterprise is behind BRANDED TASMAN PINE.

BUY BY THE BRAND

talk it over with
your timber merchant

