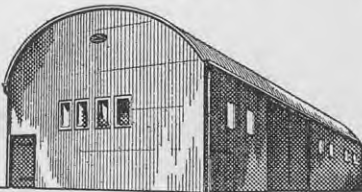


For farm buildings, warehouses, workshops, garages and factories. Extremely flexible capacity... Can be supplied in 12 ft. to 30 ft. spans... Any length from 30 ft. in multiples of 15 ft. Door and window openings can be located where required.

Ask your local branch of the Loan & Mercantile Company for full details.

\* PREFABRICATED  
\* ALL STEEL  
\* LOW COST  
\* QUICKLY  
ERECTED!



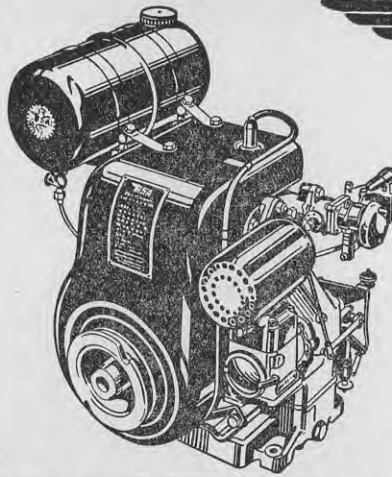
**SMISTOL**

ALL PURPOSE  
\* BUILDINGS

**N.Z. LOAN & MERCANTILE  
AGENCY CO. LIMITED.**

Incorporated in England.

Branches throughout N.Z.



# BSA POWER UNITS

MADE BY  
THE GREAT BSA ORGANISATION,  
BIRMINGHAM, ENGLAND—  
MANUFACTURERS OF THE FAMOUS  
DAIMLER AND LANCHESTER CARS.

### Models Available

120 c.c., 2 B.H.P.	weight 50lbs.
220 c.c., 3.7 B.H.P.,	weight 70½lbs.
320 c.c., 4.75 B.H.P.	weight 95lbs.
420 c.c., 5.75 B.H.P.	weight 96lbs.

Built by the world's largest manufacturers of motor-cycles, these compact, hard working power-units are ready to work for you—in the factory or on the farm. They are simple in design, cheap to run and require the very minimum of maintenance. Air-cooled, single cylinder, 4-stroke side valve.

### STOCKISTS IN ALL MAIN TOWNS

N.Z. Distributors: MESSRS. AGRICULTURAL CULTIVATORS (N.Z.) LTD.,  
P.O. Box 1102, Auckland.

AFTER A LIFETIME OF CRAWLER EXPERIENCE THIS OPERATOR SAYS

# DAVID BROWN

Ohai Motors Ltd.,  
OHAI.

Dear Sirs,

I thought you may be interested to know the wonderful performance I am getting with my David Brown Trackmaster.

I have had a life-time experience of operating all makes of crawler tractors and I find the David Brown the most stable and economical I have ever worked.

I consider the six speed gear box a big advantage over any other make of Tractor. In my opinion the David Brown is easily the best of all crawlers on the market. Fuel consumption does not exceed 1½ gallons per hour.

N. M. Strudwicke,  
Nightcaps R.D.

DAVID BROWN CRAWLERS FROM

**£1299**

f.o.r. main ports

COMPLETE with 6 forward and 2 reverse speeds, 4-speed P.T.O., choice of track widths, controlled differential steering, electric self starter, replaceable cylinder liners, force feed lubrication.

DEALERS EVERYWHERE.

N.Z. Distributors:  
TODD BROS. LTD.,  
Wellington.

*"the most stable and  
economical crawler  
I have ever worked"*

