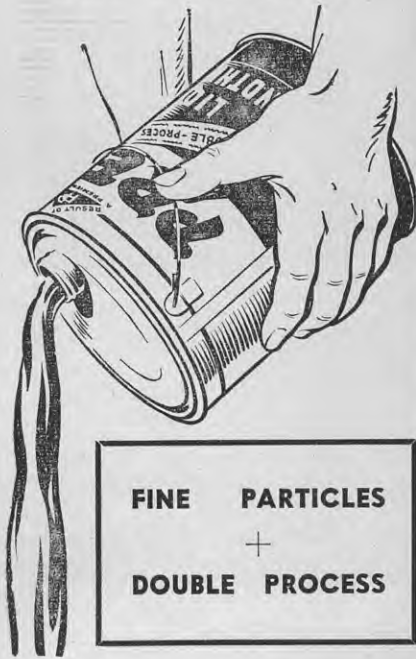


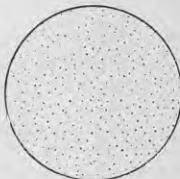
PREM

liquid phenothiazine
gives you
"shot-gun coverage"
for maximum
worm-killing power



FINE PARTICLES
+
DOUBLE PROCESS

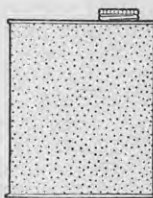
The "shot-gun coverage" of an ultra-fine dispersion of particles—each completely separated, each available individually to do its worm-killing job.



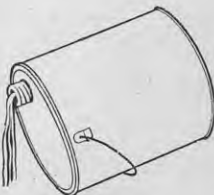
Perfect suspension from top to bottom of the tin so that

PREM

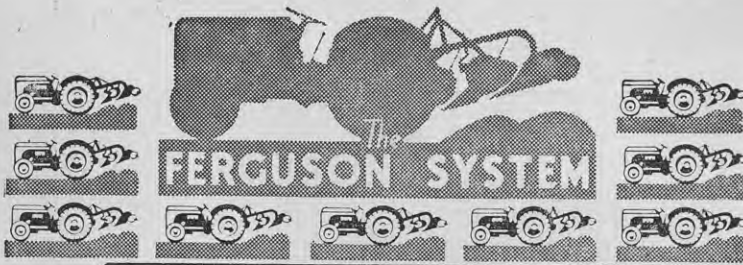
never settles out—never cakes or goes hard—reaches you ready for immediate use.



Easy running qualities — pours freely to the last drop for speedy, safe and clean drenching with instruments.



N.Z. Manufacturers & Distributors:
PREMIER PRODUCTS LTD., Wellington.
P.M.9.



FERGUSON

The **ONLY** Tractor
with these
5 exclusive advantages!

- Traction without built-in weight.
- Penetration of implement without weight.
- Finger-tip hydraulic depth control.
- Front end kept down.
- Automatic protection of tractor and implement against hidden obstructions.

C. B. Norwood Ltd., Box 298, Wellington.

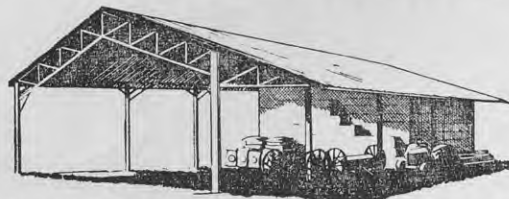


STRUCSTEEL^{REGD.}

UTILITY SHEDS

FACTORY-MADE FARM BUILDINGS

YOU can have
*one up and in
use in 7 days!*



Send today for free
illustrated literature.

"Strucsteel" Farm Buildings available in a large range of sizes for Hay Barns, Implement Sheds, Workshops, etc. Corrugated Galvanised Iron Walls if required.

L. J. FISHER & CO. LTD.,
P.O. BOX 1729, AUCKLAND.
Please send full details of
Strucsteel Farm Buildings.

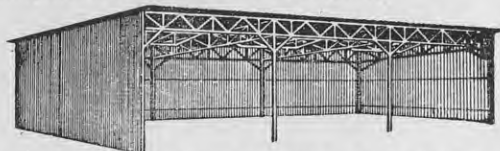
Name

Address

.....

.....

JA/5.



"Strucsteel" Utility Sheds, as above, are available in lengths of 36ft., 54ft., 72ft., 90ft., etc. and widths of 18ft. Front height 11ft., rear height 9ft. 6in. Ideal for Fertiliser, Implement and general storage purposes.

N.Z. DISTRIBUTORS:—

L. J. FISHER & CO., LTD.

30 ANZAC AVENUE, AUCKLAND, C.I. PHONE 49-148.
116 HEREFORD ST., CHRISTCHURCH, P.O. BOX 1263.
PHONE 69-994.