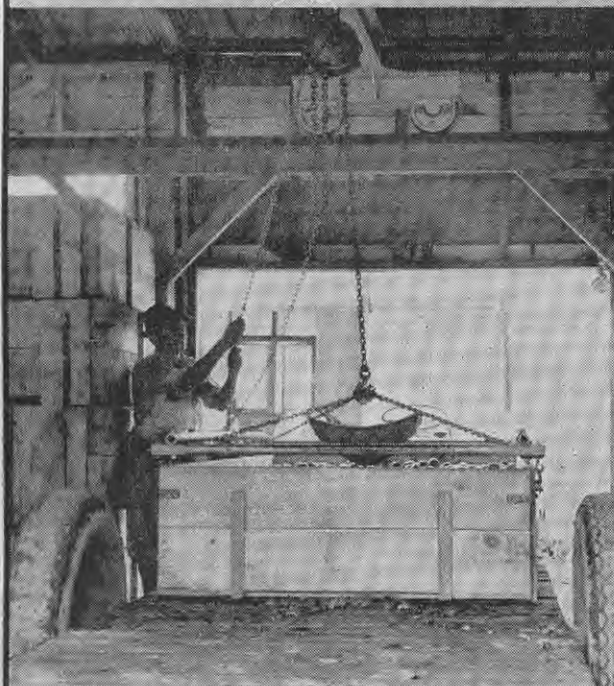


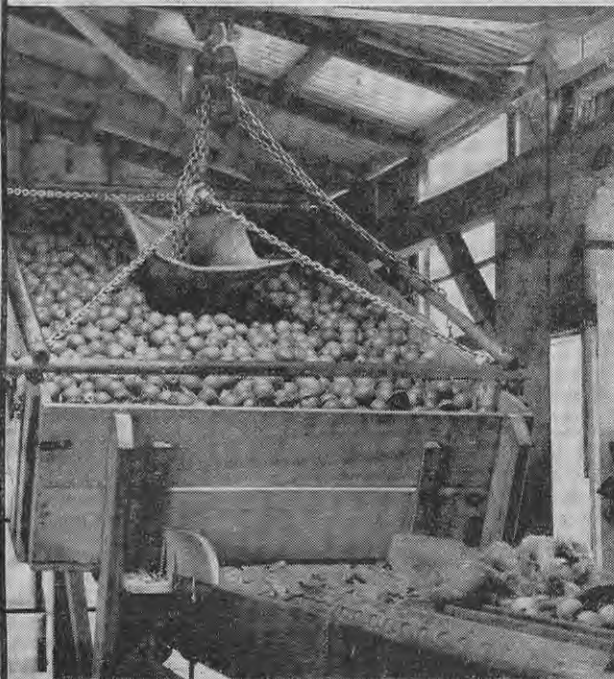
BULK HANDLING IN PACKING SHED



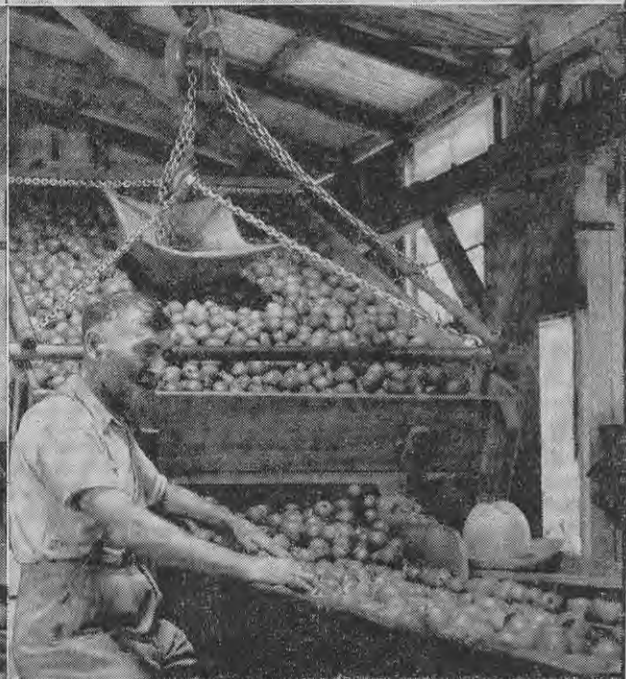
1—On arrival at the packing shed the bins are lifted with a pulley hoist and are moved to the grader or stacked four high as a reserve supply.



2—Bin being hoisted on to the counter-balanced tilting tray for feeding of fruit to the grader.



3—Bin in position at end of grader bench awaiting removal of the slide opening to start the flow of fruit.



4—The slide opening is removed and the fruit flows steadily past the grader. The turning rollers of the grader bench keep the fruit moving.